



MAPCODE

The human face of coordinates

A Short Address for Any Location on Earth

Kewal Shienmar
Managing Director
Mapcode Foundation

What is an Address?

Name

House Number

Street Name

City



What is an Address?

Name

House Number

Street Name

City, State

Country



What is an Address?

Name

Company

House Number

Street Name,

Floor, Apartment

City, State

Country



The Problem with Addresses



Having It

Less than 50% of the dwellings on Earth have a street name or house number



Finding It

Where *is* the “Machakos” Village”?
Where is “Kethemboni Road”?
Where is “number 127” on that road

Not Having it = Not Finding it

Kareem Abdullah

Pharmacist

Kareem's Chemist

Likoni

Kenya

Tel. +254356247643

Three miles east along the A14 Likoni-Ukunda national road, turn left past the petrol station on the right. Pharmacy is next to the greengrocers store.

*Pharmacy is next to the greengrocers store.
road, turn left past the petrol station on the right.
Three miles east along the A14 Likoni-Ukunda national*

The Solution: Coordinates



Having It

Every place on Earth has a coordinate. Almost every phone can show it (even without a signal!)



Finding It

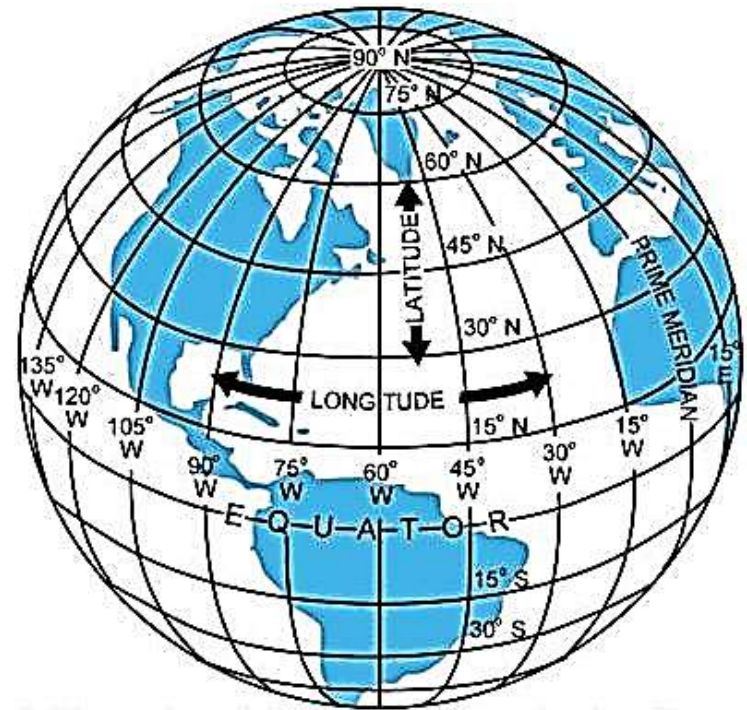
The coordinate **says** where the place is

Coordinates

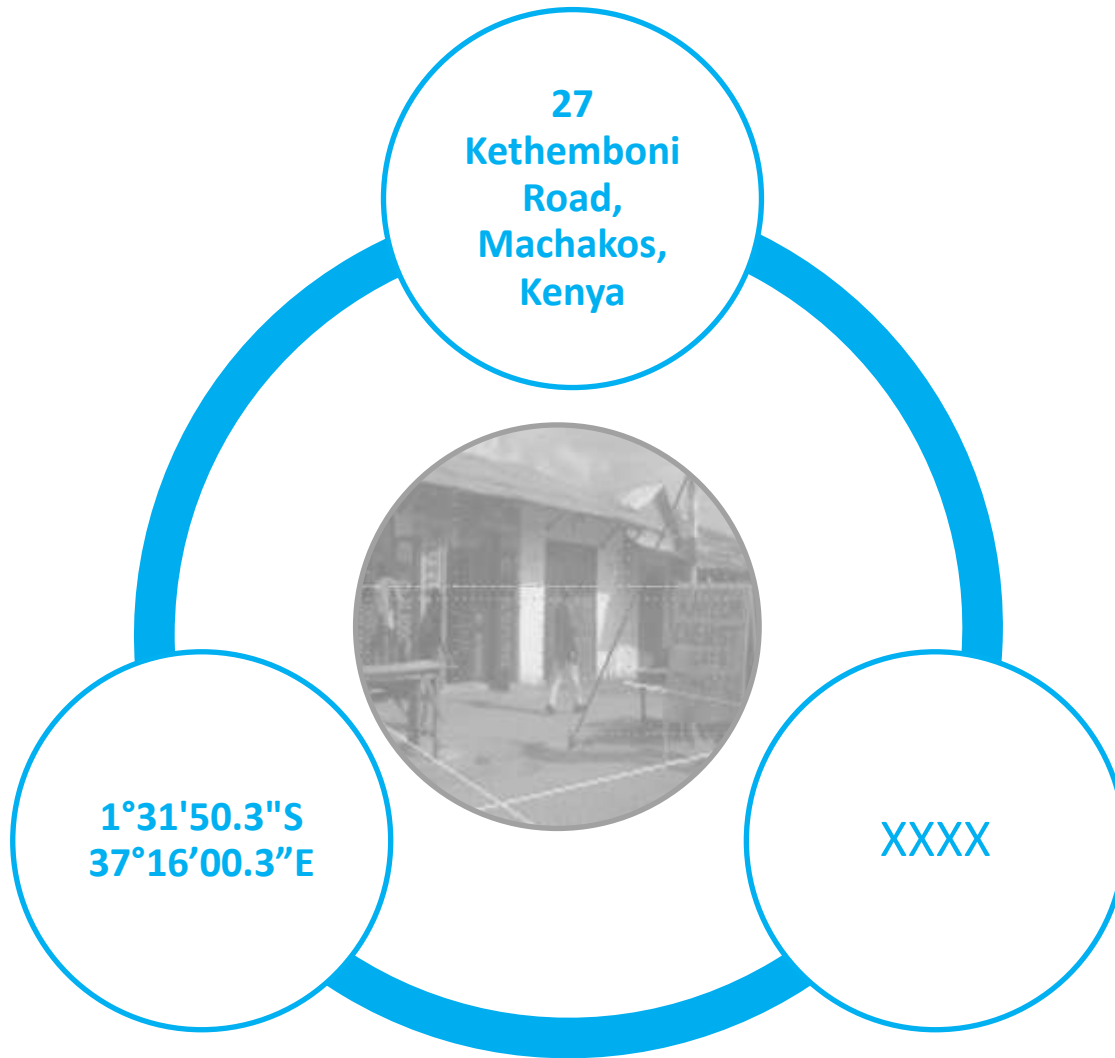
1°31'50.3"S 37°16'00.3"E

(3,5 meter precision)

Long, Complicated
Techy & Nerdy



The Solution: Codes



FULL ADDRESS:

Kethemboni Road
Machakos
Kenya

V

1°31'50.3"S 37°16'00.3"E

V

XXXX

The Solution: Codes



Database System

Each location is manually *assigned* a code



Grid System

Any coordinate can automatically be converted into a code, and vice versa

What is a Mapcode?



A very **short** code

Consisting of **digits** and **letters**, separated by a **dot**

Defining a **location** on Earth

Accurate to within a **few meters**

Any Location on Earth



Any Location on Earth



Any Location on Earth

MAPCODE

New York
YDV.3X



Any Location on Earth



Any Location on Earth



What is a Mapcode?

The best possible **grid** system

The most **user-friendly** system

Free, open source, unbranded

Widely **supported**



Underlying Mapcode Principal

There is a conversion from longitude/latitude to mapcode (and vice versa)

Every location has a mapcode **within a context** (e.g. “Lisbon, Portugal”)

Centro de Congressos de Lisboa

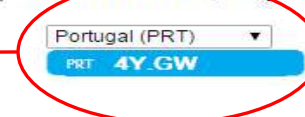
Praça Indústrias
1300-307 Lisboa
Portugal

Longitude/latitude:
38.698912, -9.183404

Mapcode in Portugal
PRT 4Y.GW



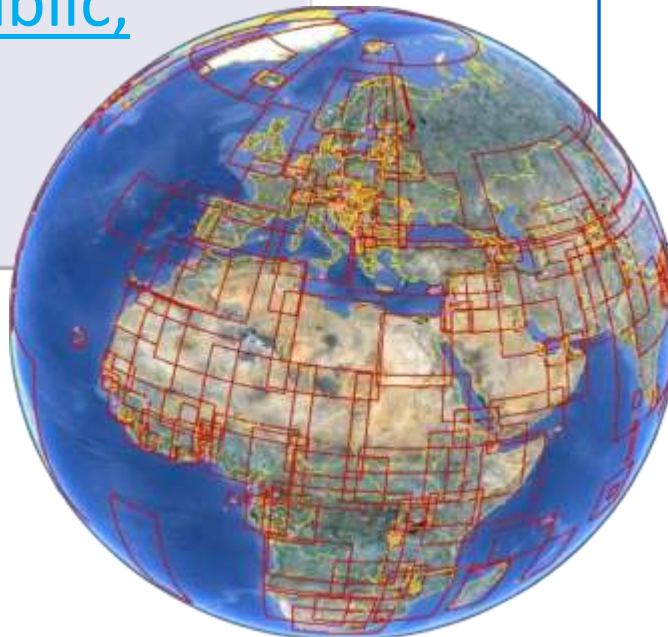
Mapcode for latitude/longitude 38.698912, -9.183404:



A New Standard

MAPCODE

- A standard for representing locations
- designed for public, every-day use.



Unlike other standards:

- **general** (*WGS84 etc.*)
- **3D** (*UTMz etc.*)
- **military** (*MGRS etc.*)
- **local** (*British National Grid etc.*)

Context Makes for Shorter Codes

In order to achieve a 5m precision:

- locations **anywhere on Earth** need at most **9** characters
- locations anywhere in small countries need at most **6** characters



note: humans always know the country context

In the USA, India etc. they always know the *state* context

Variable Code Length

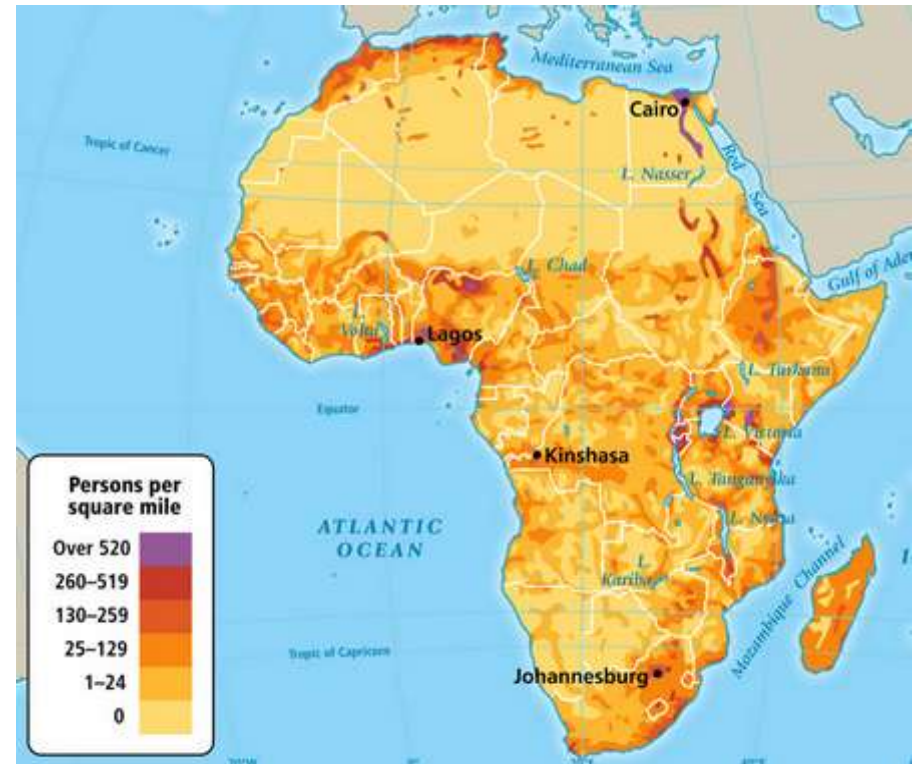
Codes need **not**
all be the **same**
length



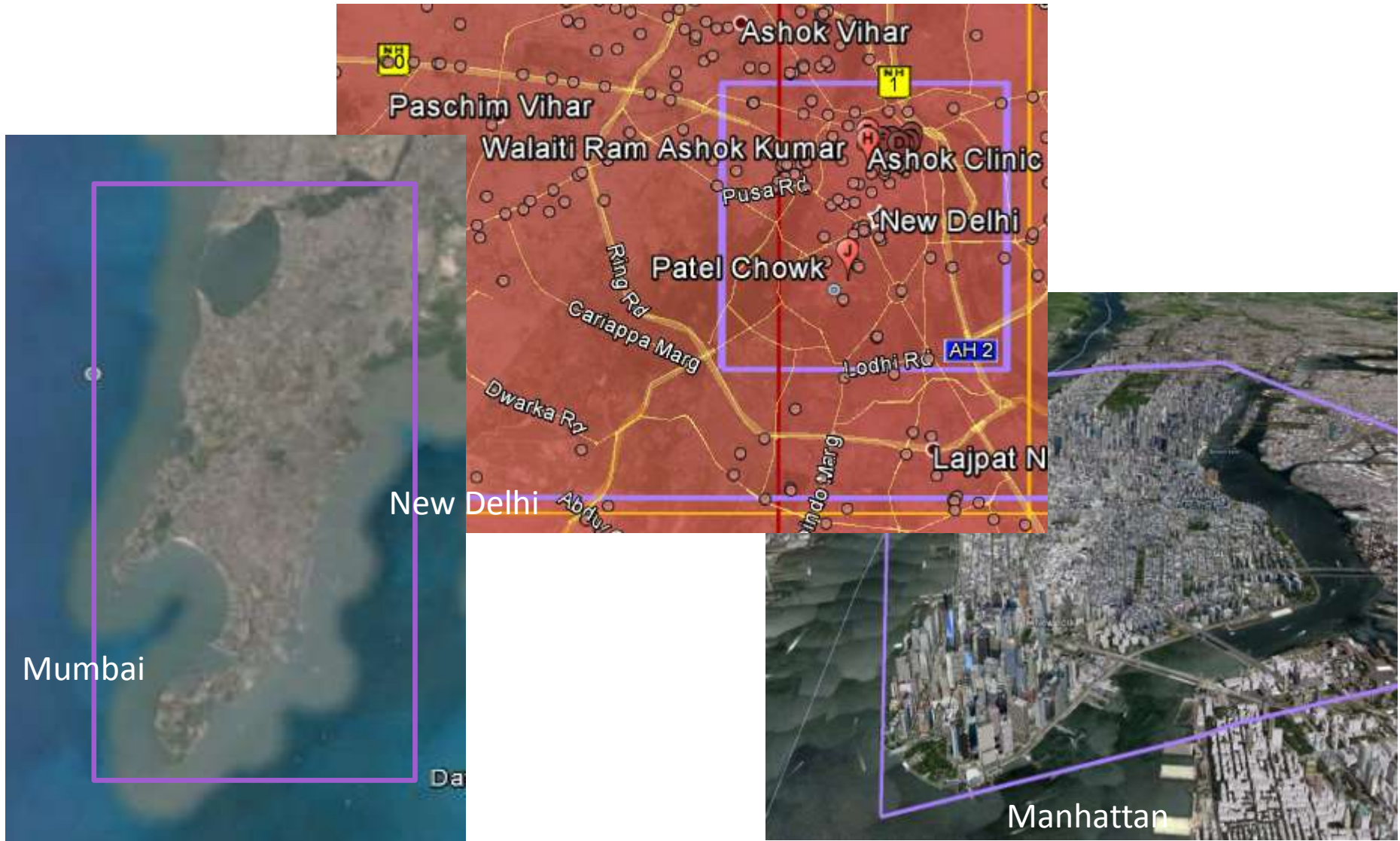
Short Codes for High Density Areas

Short codes reserved for areas of high population density

- Majority of population has a **short mapcode**
- The data table covers thousands of the largest large cities on earth



4 characters for the Highest-Density Areas



Precise Enough



Mapcodes are **precise enough** for human, everyday use

- The territory is divided into cells of at most 10 by 10 meters
- A location is always in one of those cells
- A mapcode indicates the center of a cell
- Locations are at most 5m (2½m on average) of such a center (a mapcode)

More Precise & Flexible

5m precision is usually *more* **precise** (and **flexible**) than an address

People can **pick** the location they wish to associate with their address



- The main entrance
- The car park

Mapcodes are independent of map data, so not affected by **map problems**



- e.g. house number interpolation problems

What is Covered?

31 Character basis

100 km ² areas: AB.CD	Densely populated cities, especially capital cities
6,000 km ² areas: AB.CDE	Very large cities and conglomerates
250,000 km ² areas: ABC.DEF	Small countries, states, collections of highly populated conglomerates
5,000,000 km ² areas: ABCD.EFG	Enormous countries (USA, China, Russia...)
The World ABCDE.FGHI	The World (including oceans)

An Algorithm Containing a Table

An algorithm includes a large data table



The mapcode system defines a simple conversion

The conversion uses a data table (16,000 rectangles)

Every territory and every major population center on Earth

Note: this used to be unheard-of. Nowadays wishing cards come with polyphonic music recordings

Recognizable



Mapcodes are easily **recognized**

(like emails, websites or phone numbers)

- Website: www.mapcode.com
- Email: info@mapcode.com
- Phone: [+31 20 557 5801](tel:+31205575801)
- Mapcode: [DK7.C9T](#)

Mapcodes do not look like words or numbers

- Mix of consonants and digits (no vowels)
- No all-digit codes exist

Also important for search box support!

Easy to Communicate Verbally



Mapcodes are easy to communicate

- short
- case-insensitive
 - *No “capital W lowercase h”*
- no vowels
- dot-separated
 - *Like websites and emails*
- symbol-free
 - *Ampersand, degree-symbol, forward slash*

Unambiguous



Mapcodes are unambiguous

- Every location on Earth has a mapcode
 - *usually, several mapcodes!*
- A mapcode represents **one** location
 - *within a context!*

Easy to Remember



Mapcodes are easy to **remember**

- mapcodes are short
- the context need seldom be stated
- When codes are longer, neighbourhoods usually share the same prefix

International



Foreign alphabet support

- easy to **write**
(few strokes, no accents)
- easy to **type**
- easy to verbally **communicate**
- **unambiguous**
(H in Roman, Greek, Cyrillic)
- no **vowels**
(where possible)

HPRV.1234	Roman
ԺԵՊՏ.1234	Armenian
চতদব.১২৩৪	Bengali
HPЯЧ.1234	Cyrillic
ႠႡႢႣ.1234	Georgian
HPΨΦ.1234	Greek
ਟਨਭਲ.੧੨੩੪	Gurmukhi
1234 .אבגד	Hebrew
टनभल.१२३४	Hindi
サヒヘモ.1234	Katakana
ຊຜມວ.1234	Lao
ຊຜມວ.๑๒๓๔	Thai

A-Political



Mapcodes are **a-political**

- The data table covers all known territories on Earth
 - *and with very wide margins*
- Every location also has an "international" mapcode
 - *always 9 characters*
 - *context less, a-political*
 - *covers international waters, e.g. oil-rigs*

A Natural Part of the Address

Kareem Abdullah

Pharmacist

Kareem's Chemist

Kenya

KEN QX6.XJ4

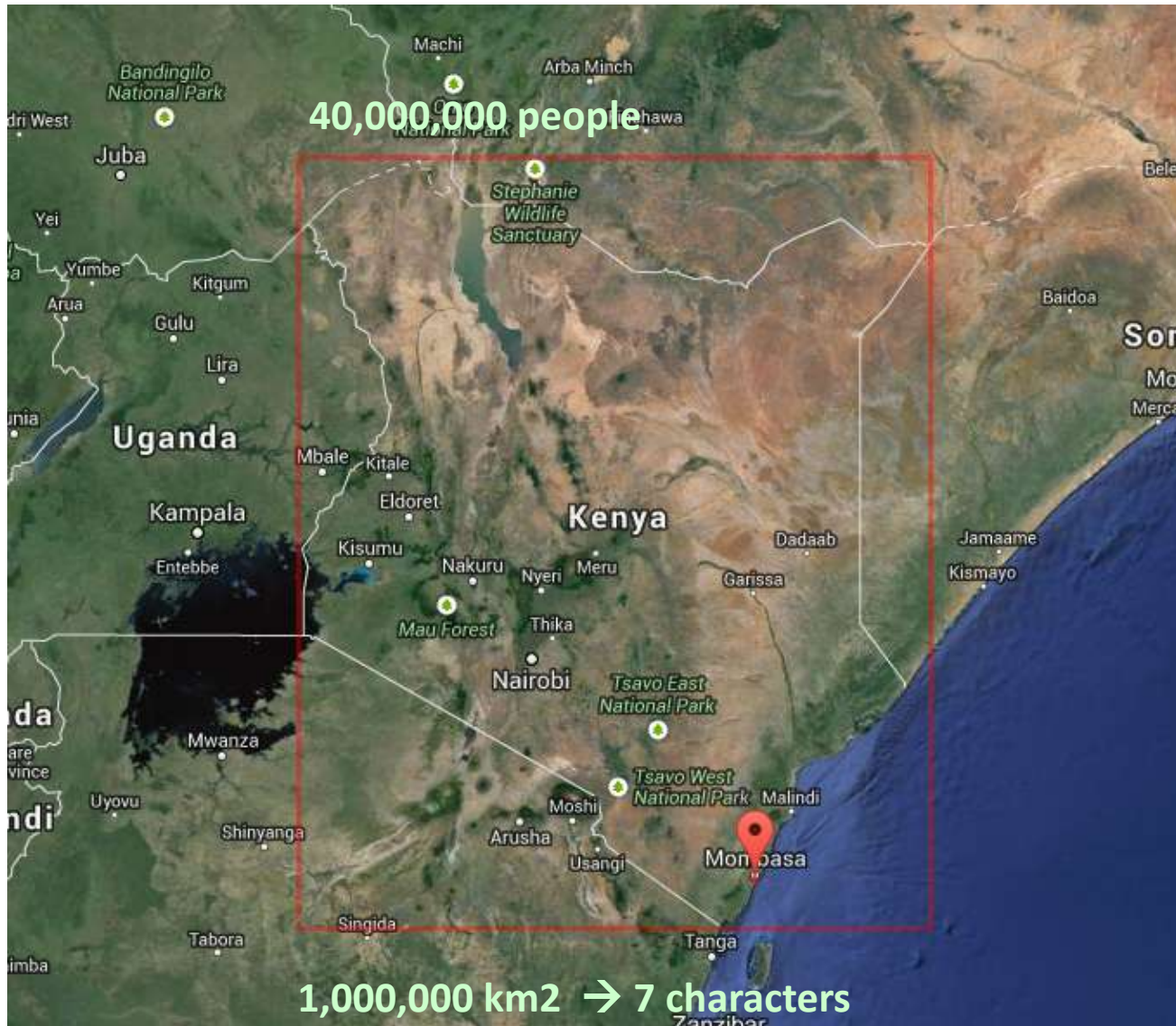
Tel. +254356247643

161 +524329541043

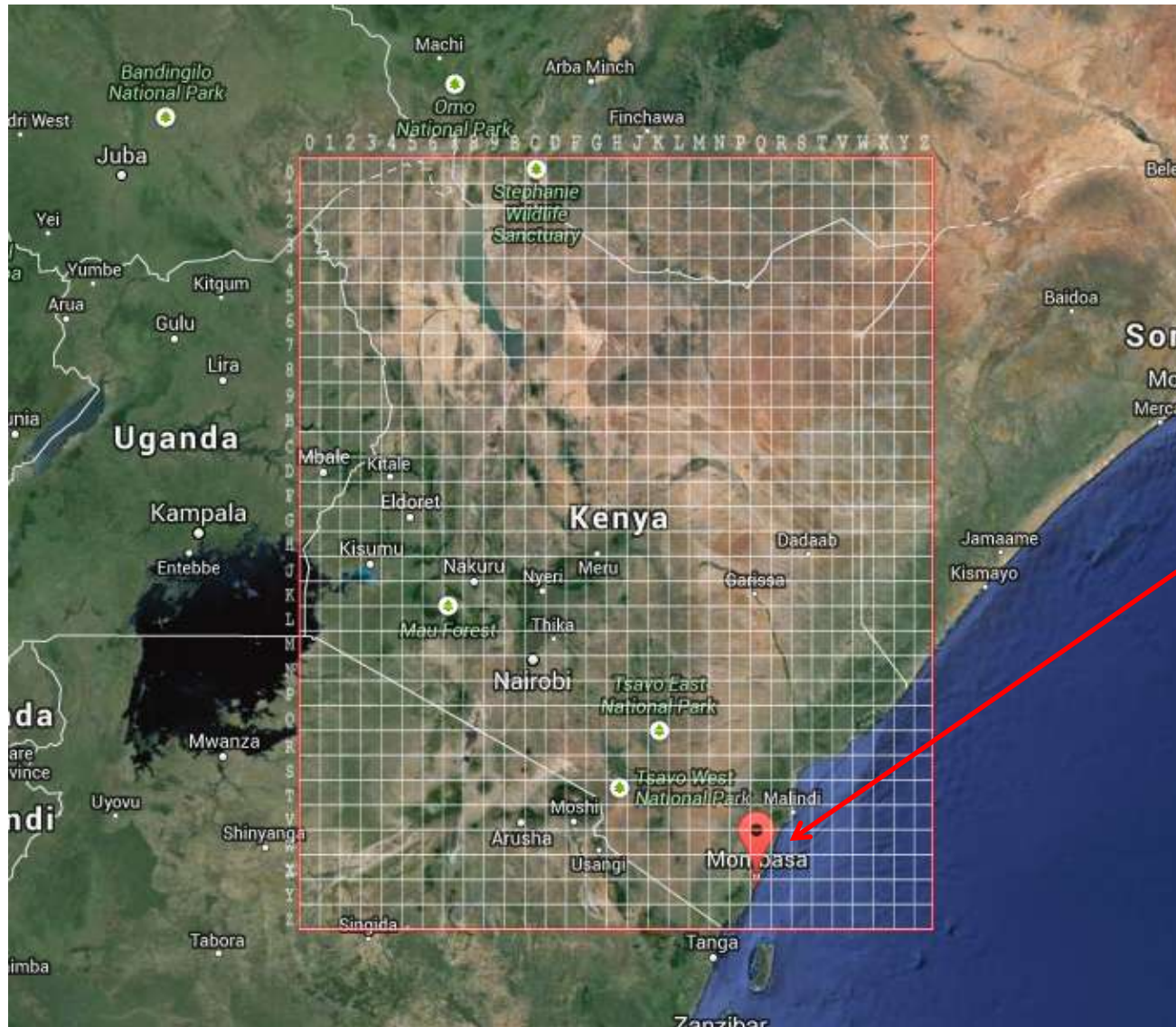
KEN QX6.XJ4

Kenya

Kenya



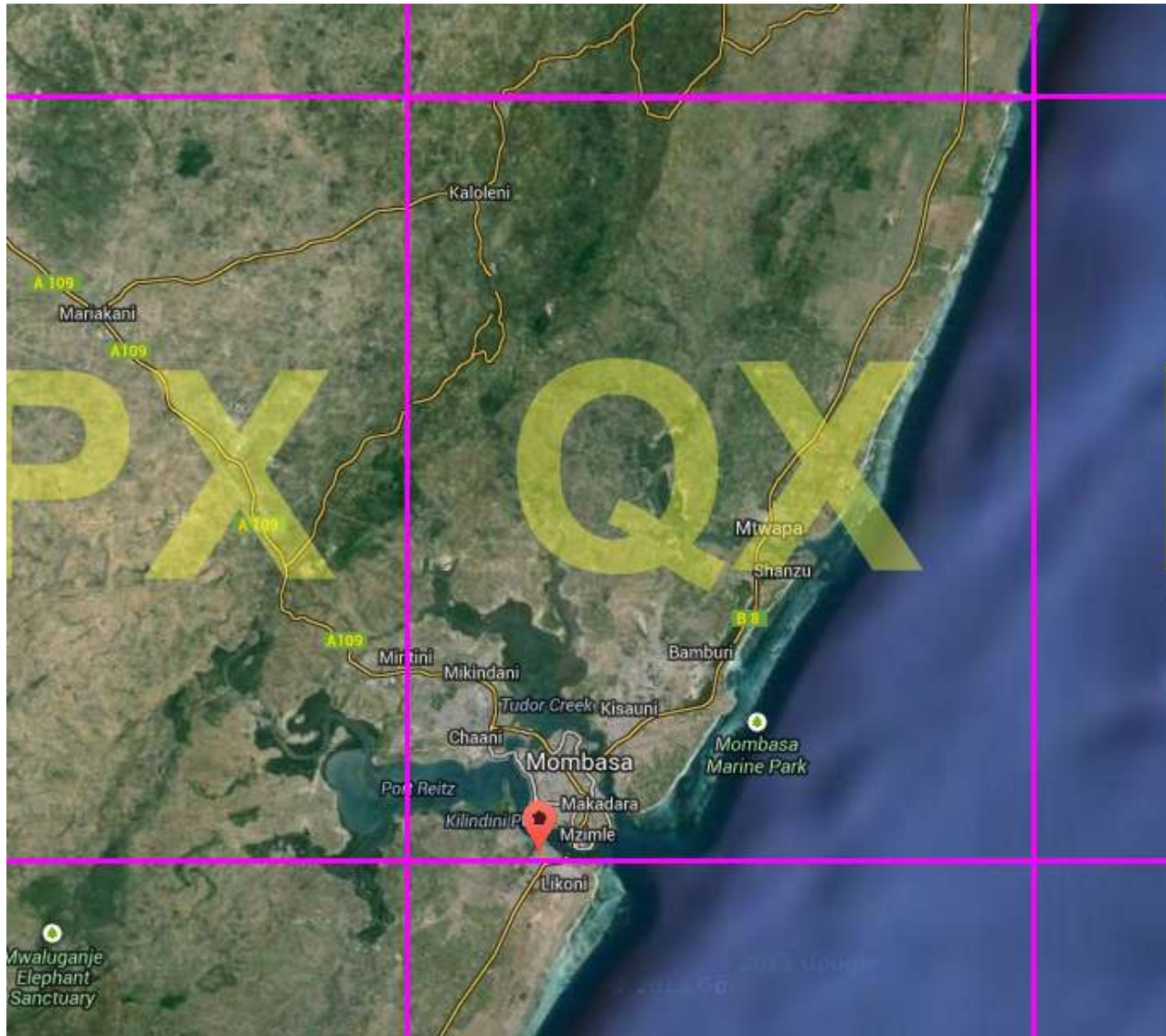
The first two letters:



Area QX

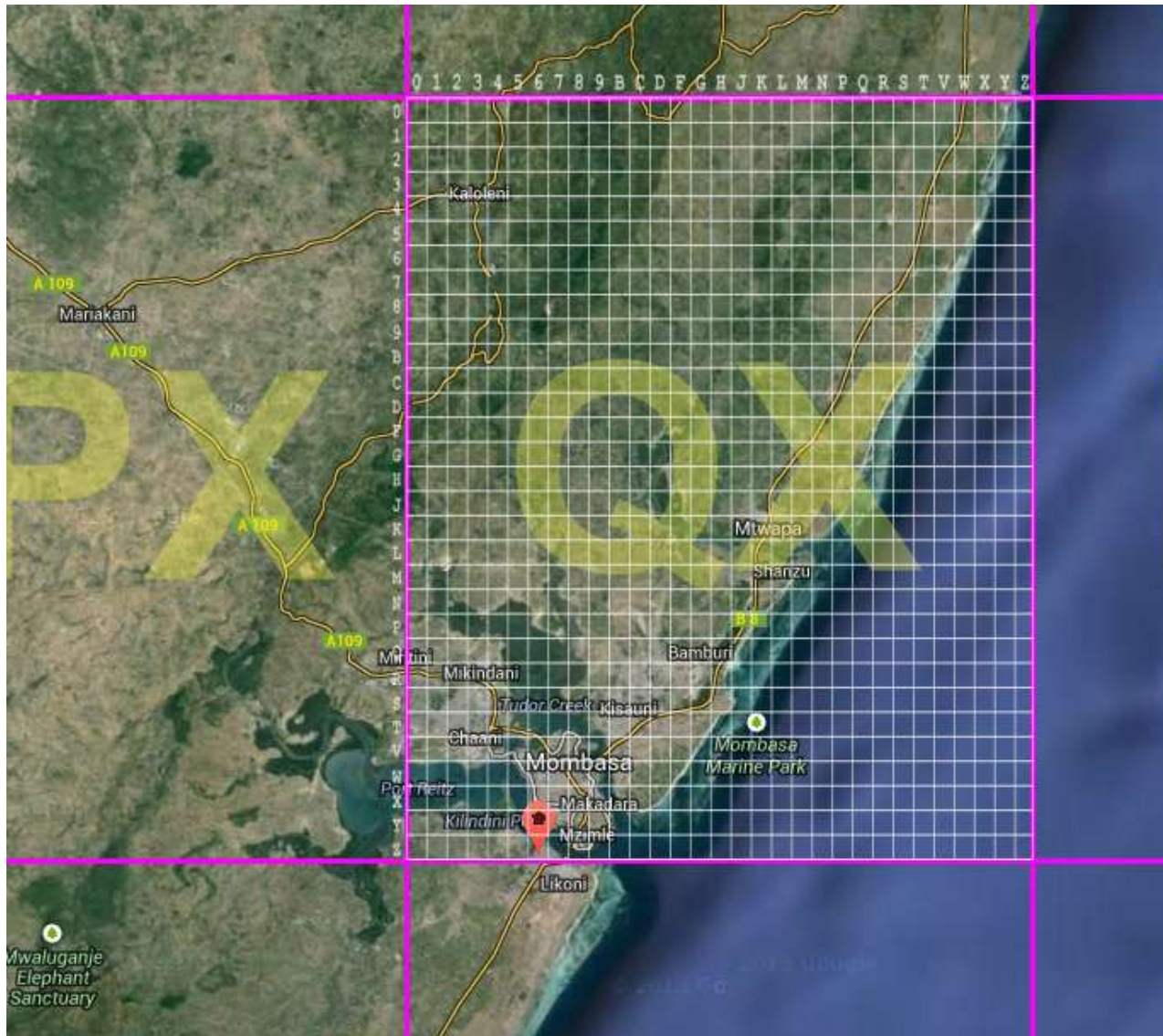
30x35 km
areas

Kenya QX** .***



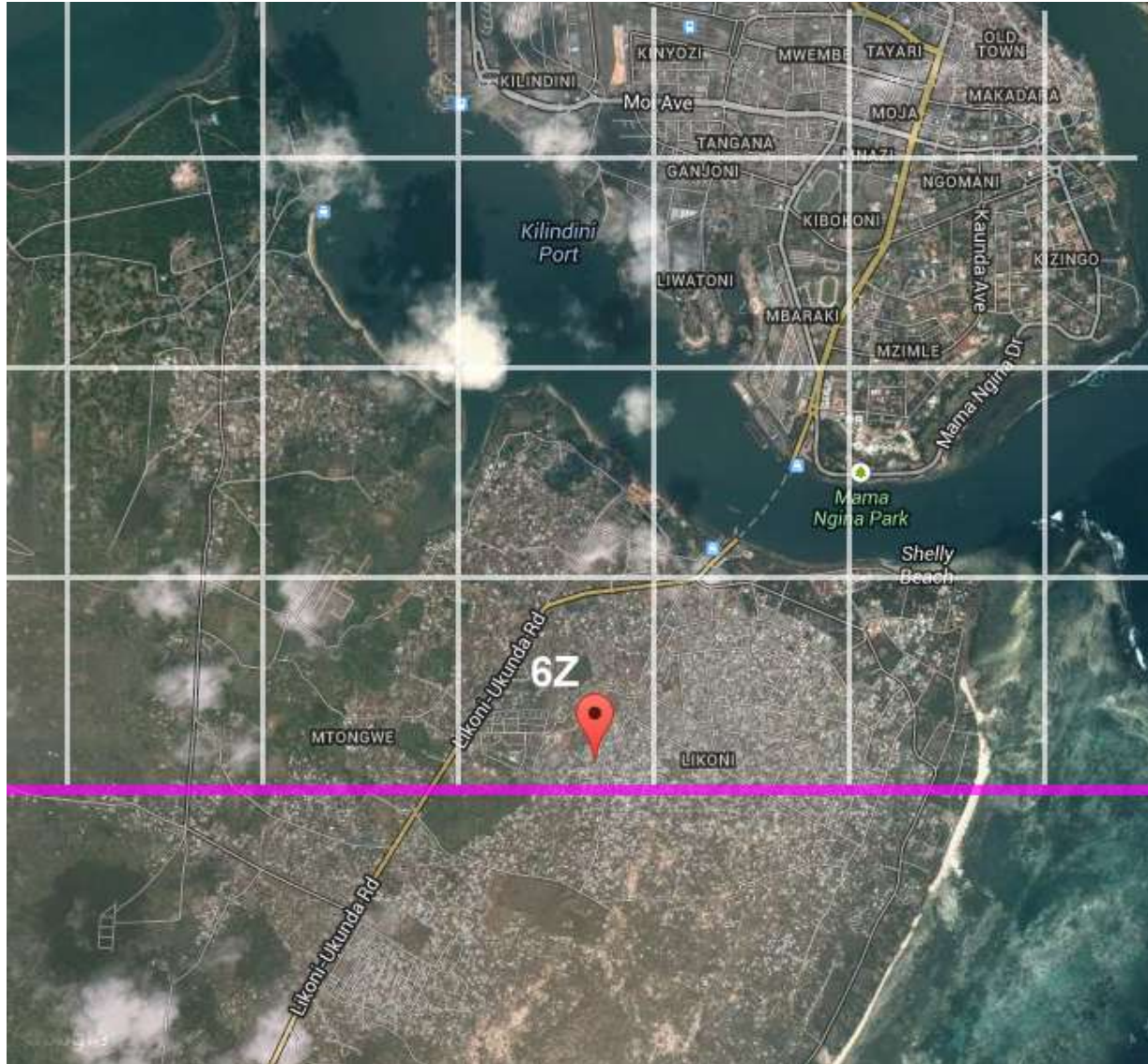
Area QX

The next two letters:



Area **QX**
Subarea **6Z**

Kenya QX6Z.***



Area QX
Subarea 6Z

Kenya QX6Z.***



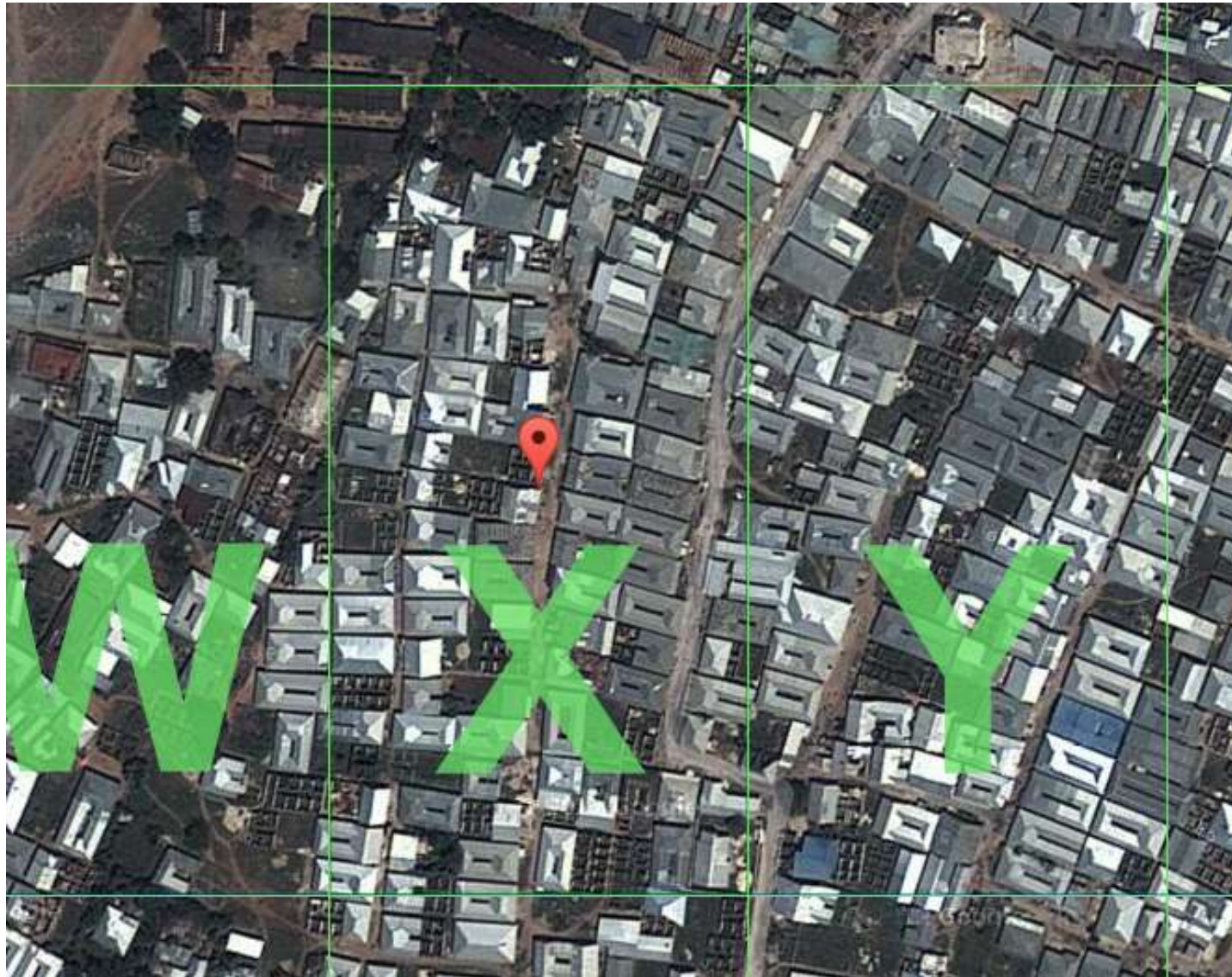
Area QX
Subarea 6Z

Kenya QX6Z.X**



Area **QX**
Subarea **6Z**
Cell **X**

Kenya QX6Z.X**



Area QX
Subarea 6Z
Cell X

Kenya QX6Z.X**



Area QX
Subarea 6Z
Cell X

Kenya QX6Z.XJ3

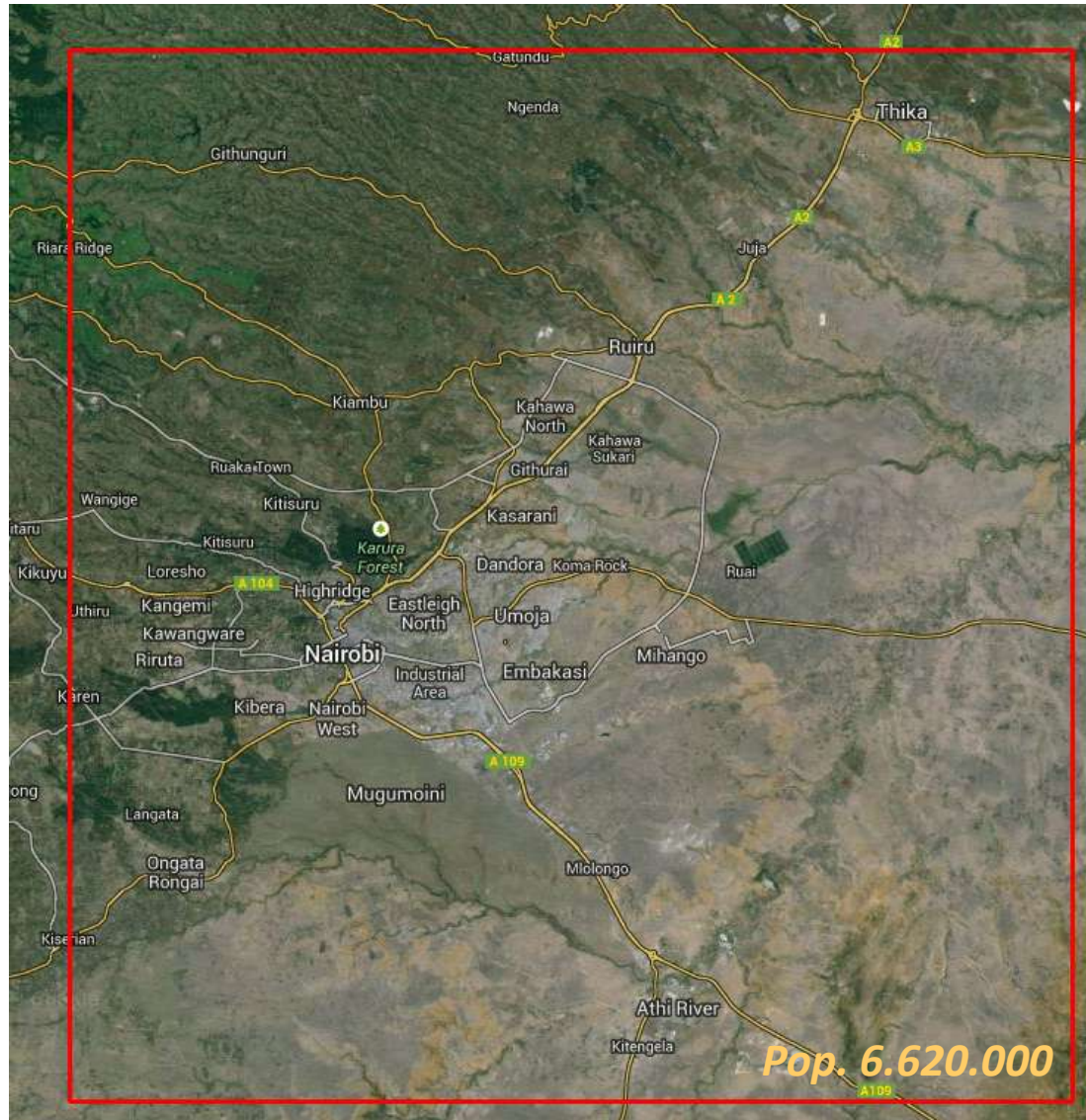


Kareem Abdullah
Pharmacist
Kareem's Chemist
Kenya **QX6Z.XJ4**

Area **QX**
Subarea **6Z**
Cell **X**
Location **J4**

3,000 km² around Nairobi

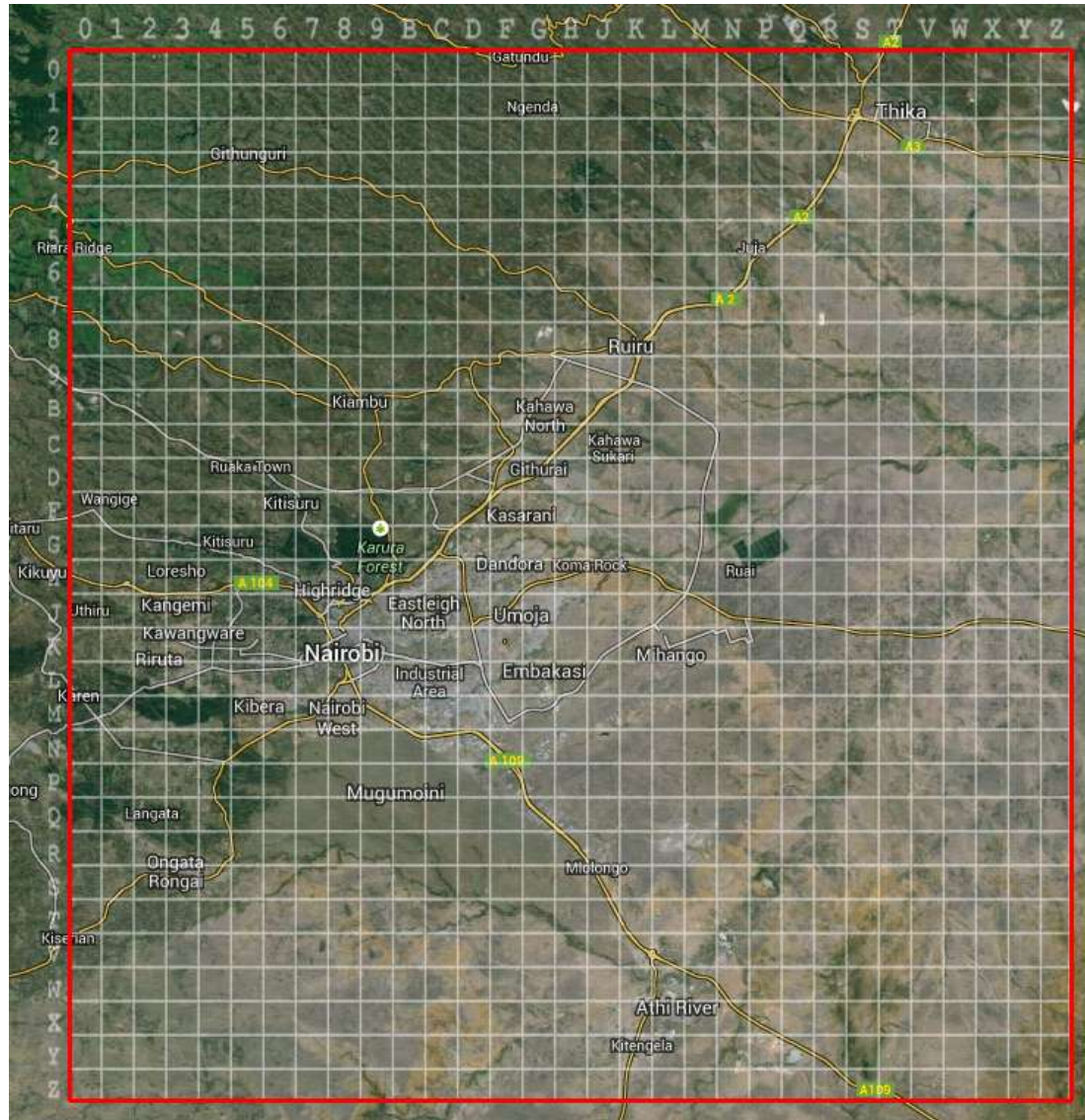
15% of
population
lives in this area



3,000 km² around Nairobi

15% of
population
lives in this area

Divided into
about 1000
areas
of 3 km² each

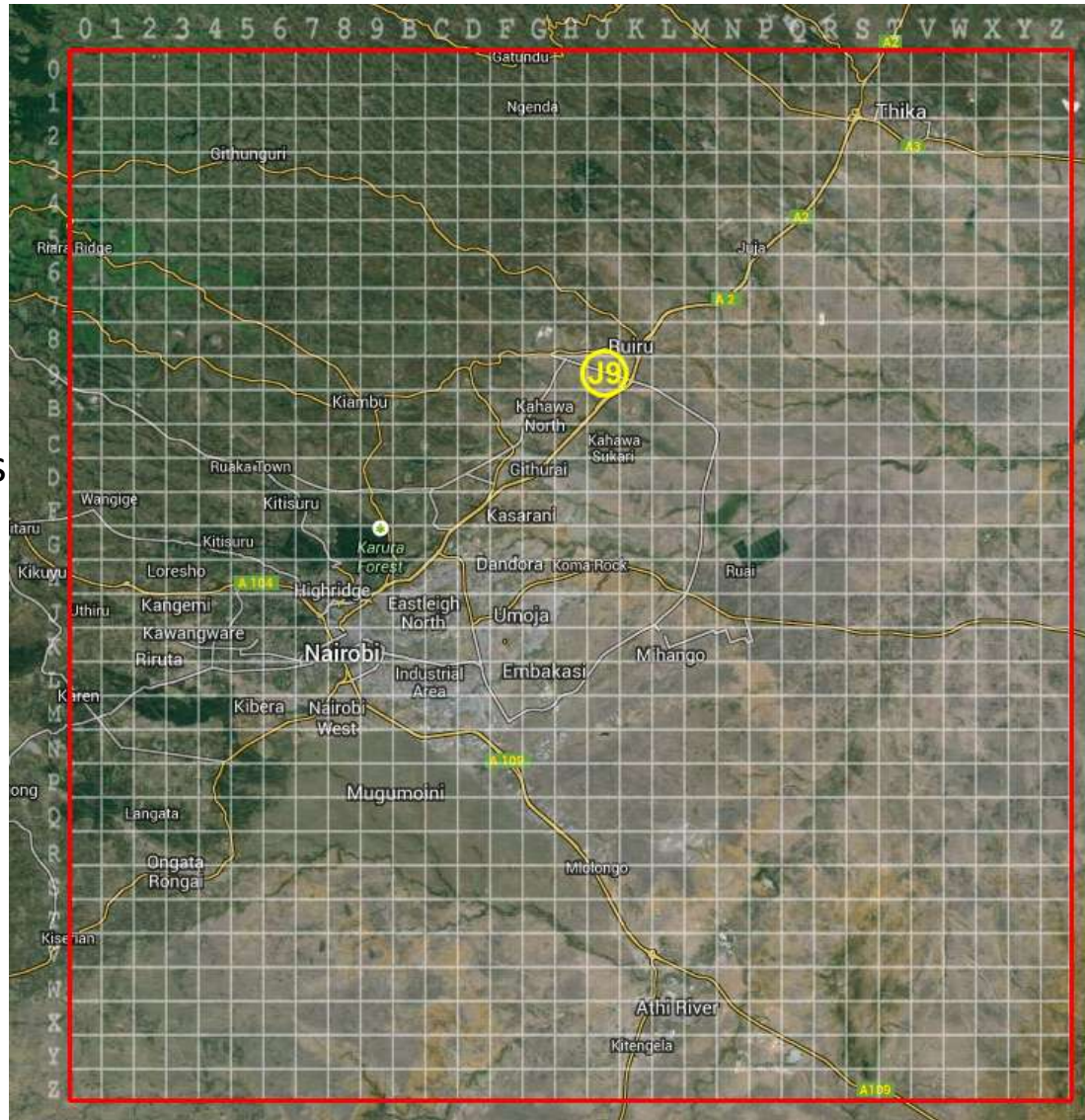


J9.XXX

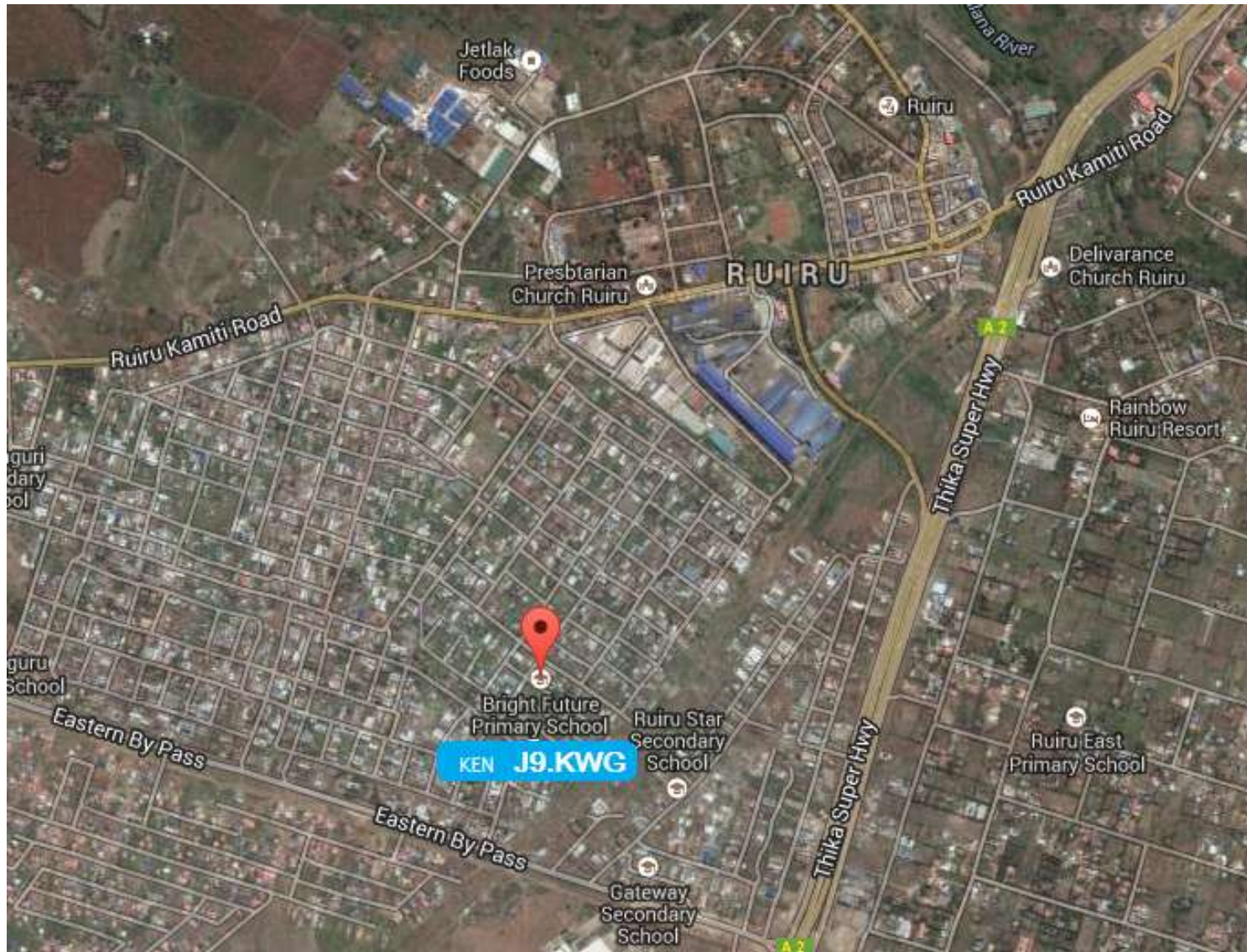
15% of population lives in this area

Divided into about 1000 areas of 3 km² each

e.g. Ruiru in area J9



3,000 km² around Nairobi



3,000 km² around Nairobi



Mombasa, Miritini



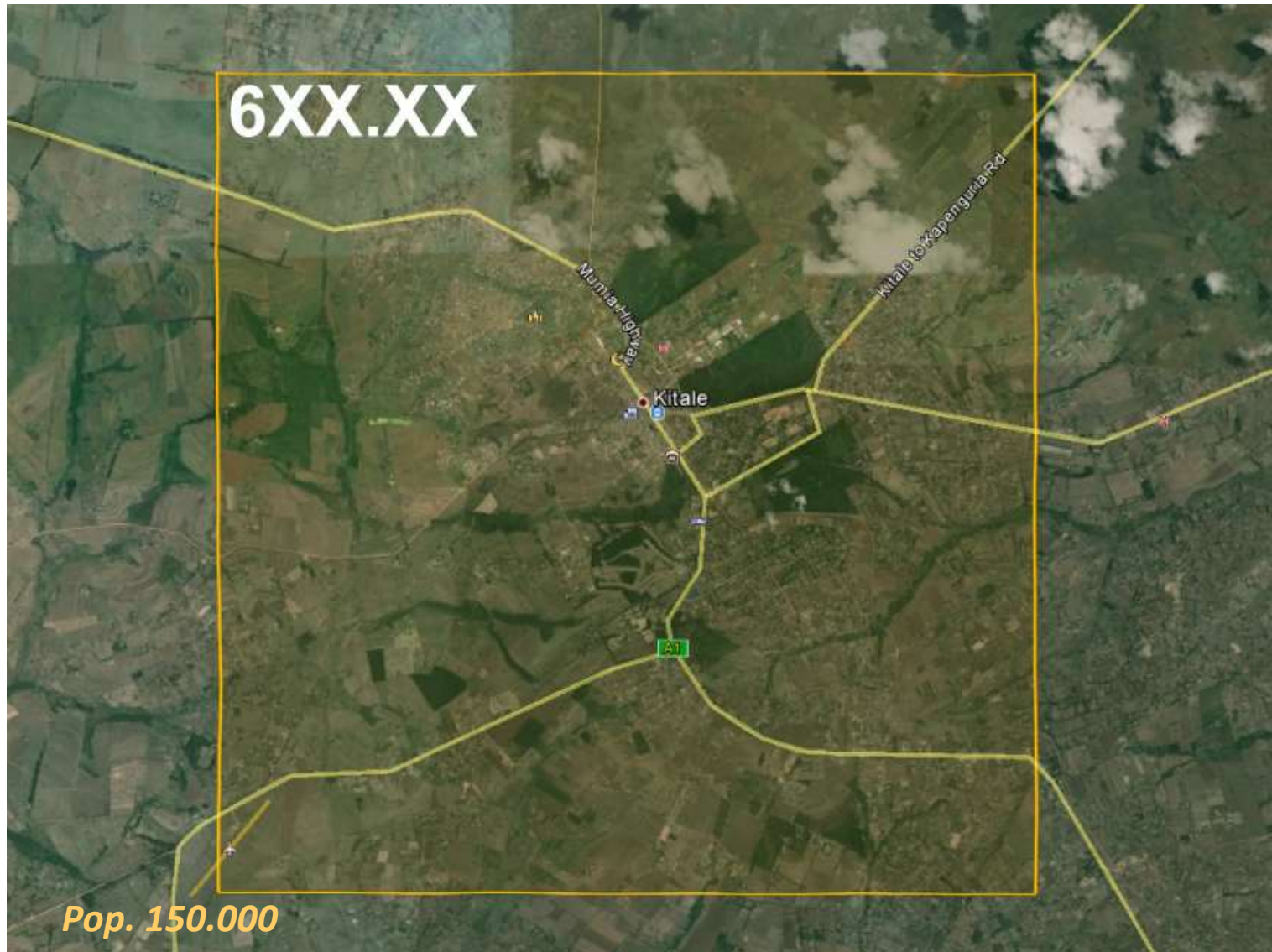
Nakuru (Baruti, Viwanda, Mawanga)



Kisumu, Kolwa



Kitale



Kakamega



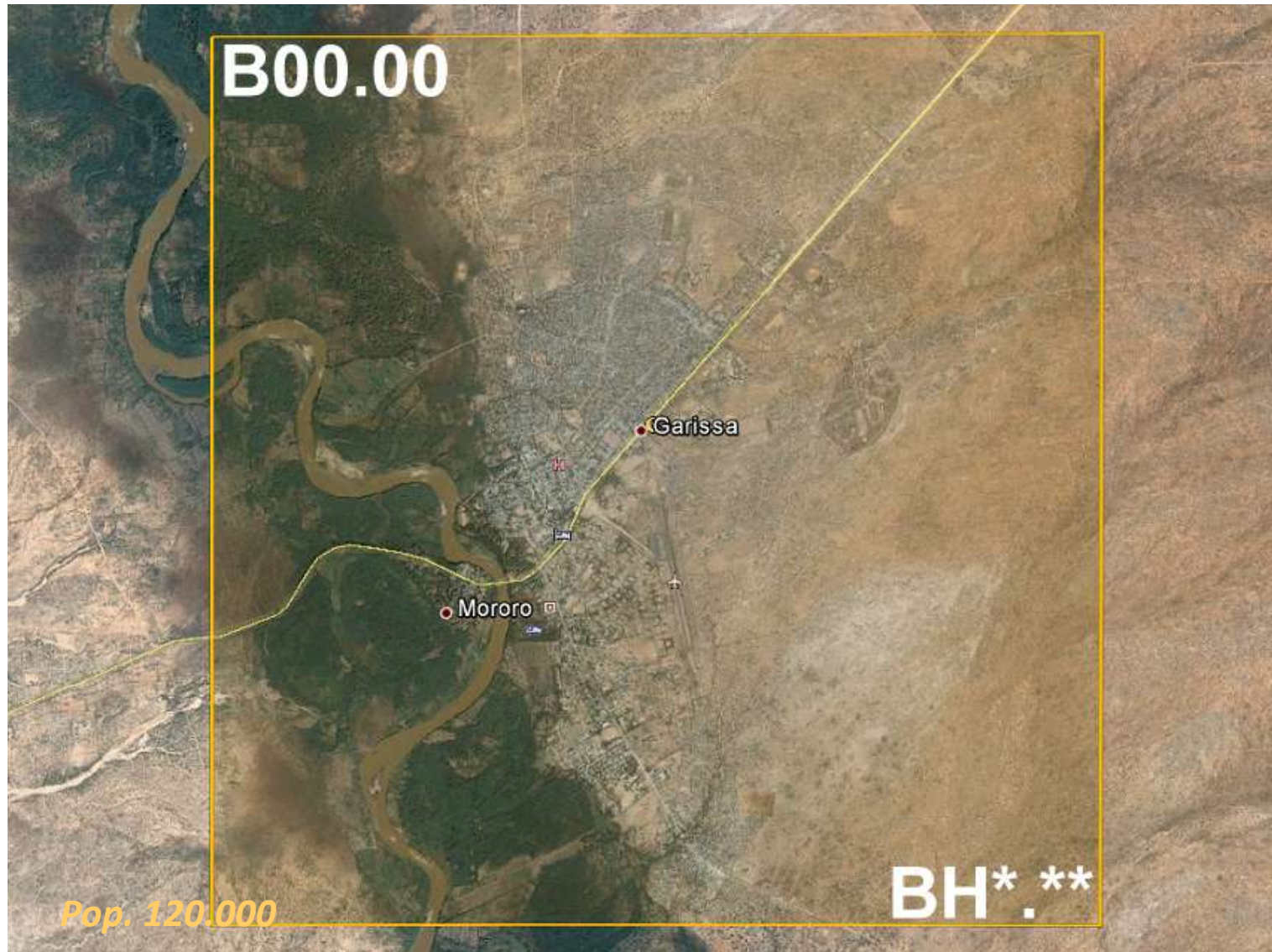
Malindi (Ganda)



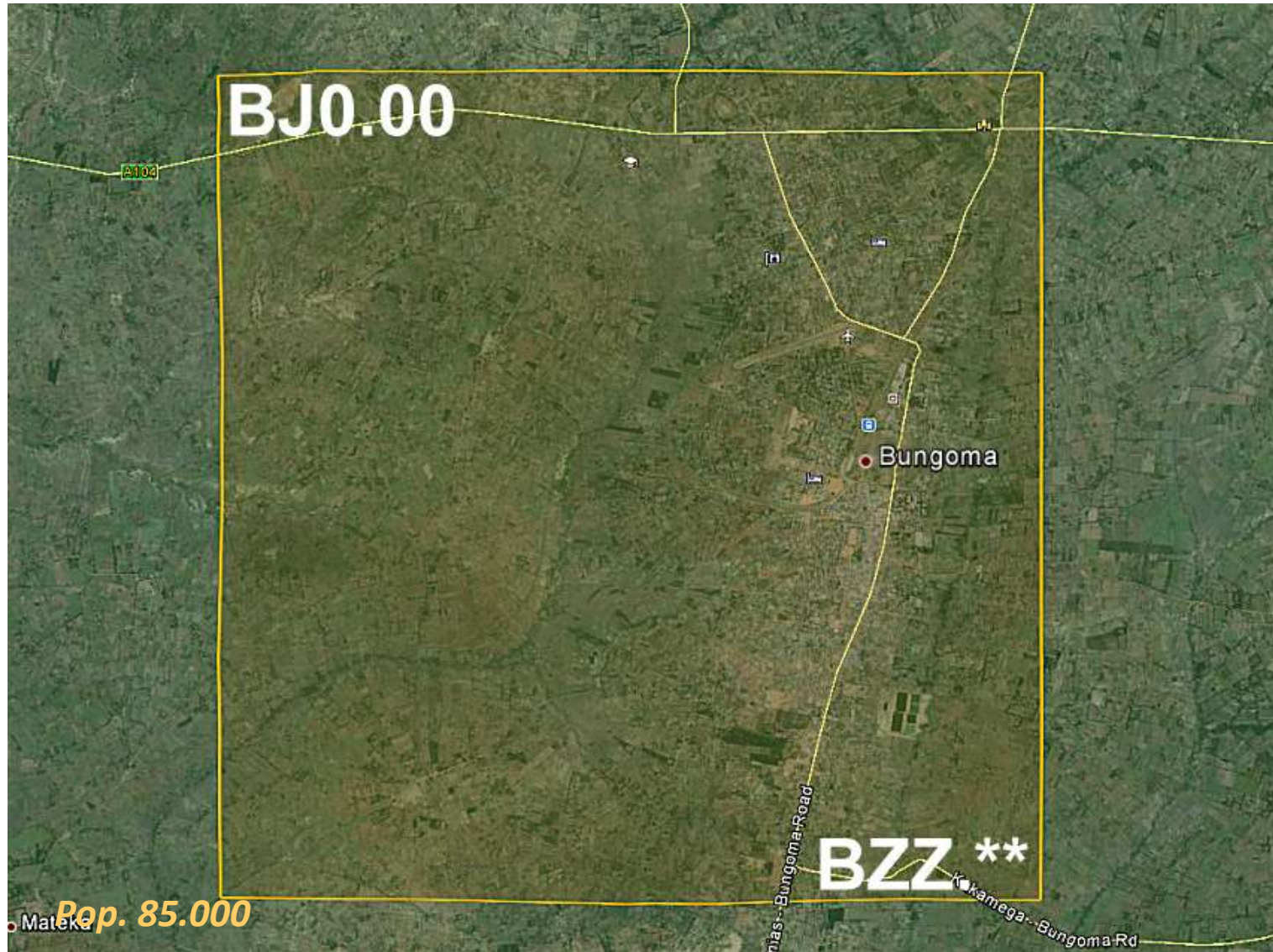
Nyeri (Kiganjo, Gatitu)



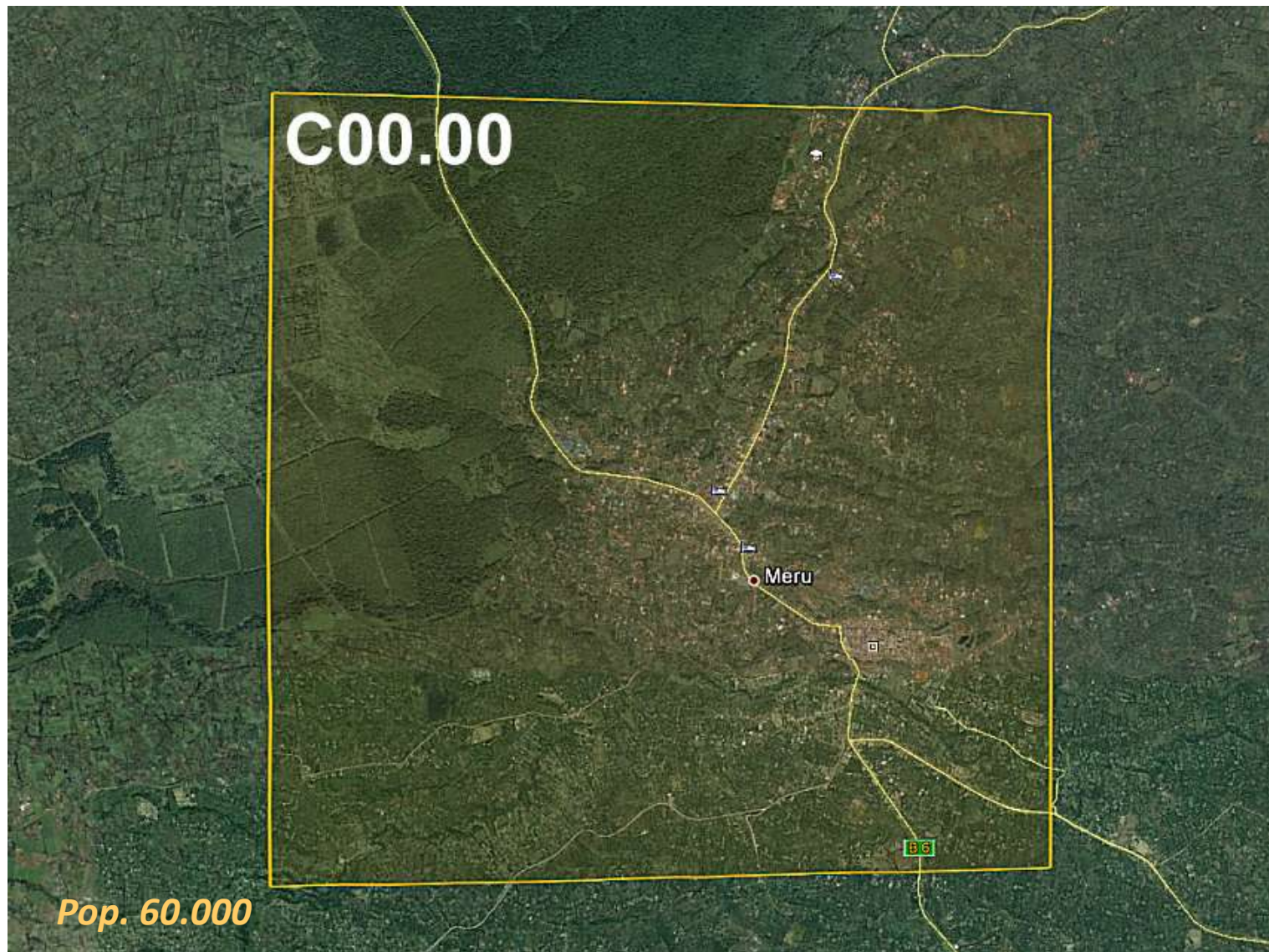
Garissa (Mororo)



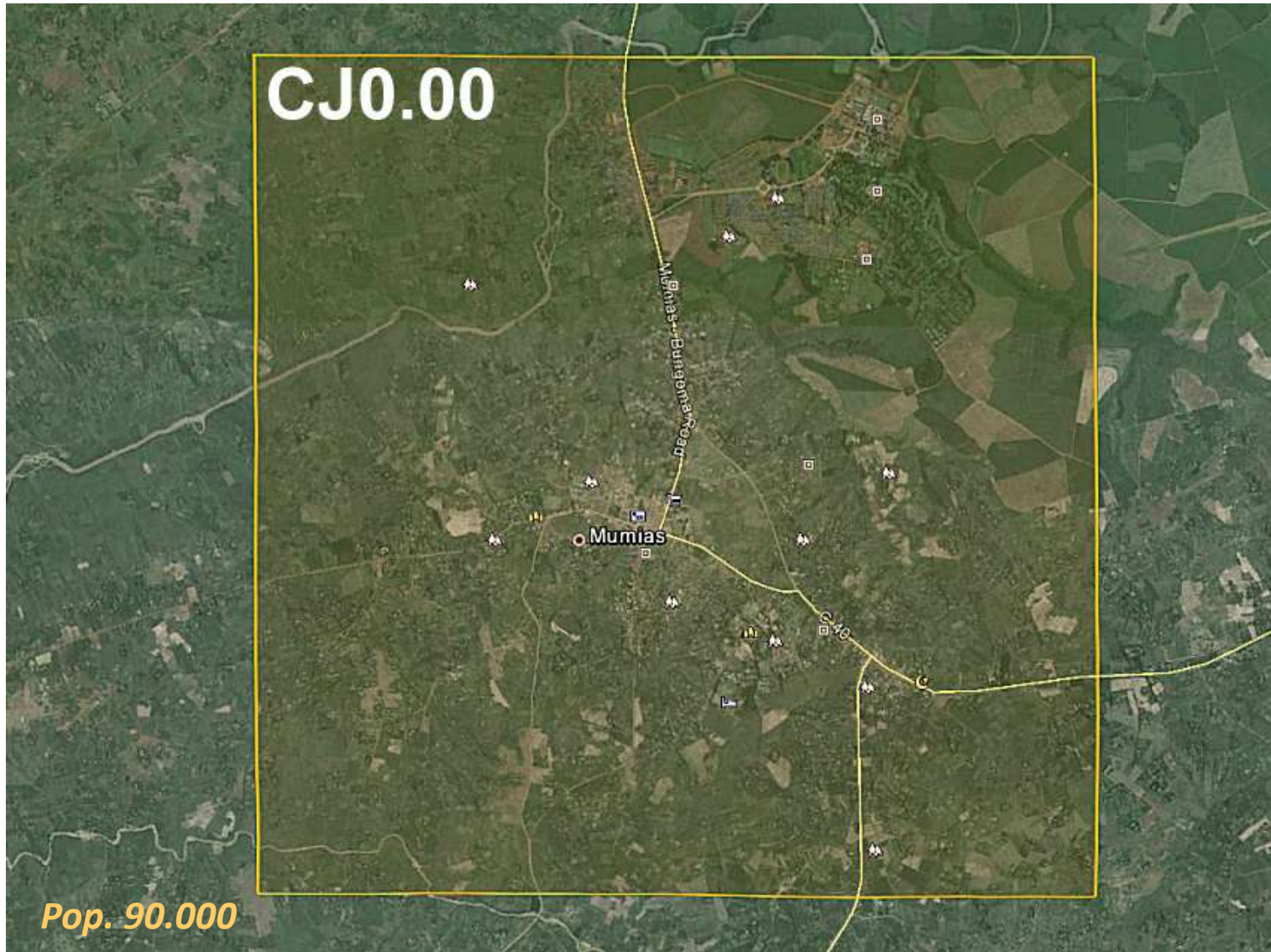
Bungoma



Meru



Mumias

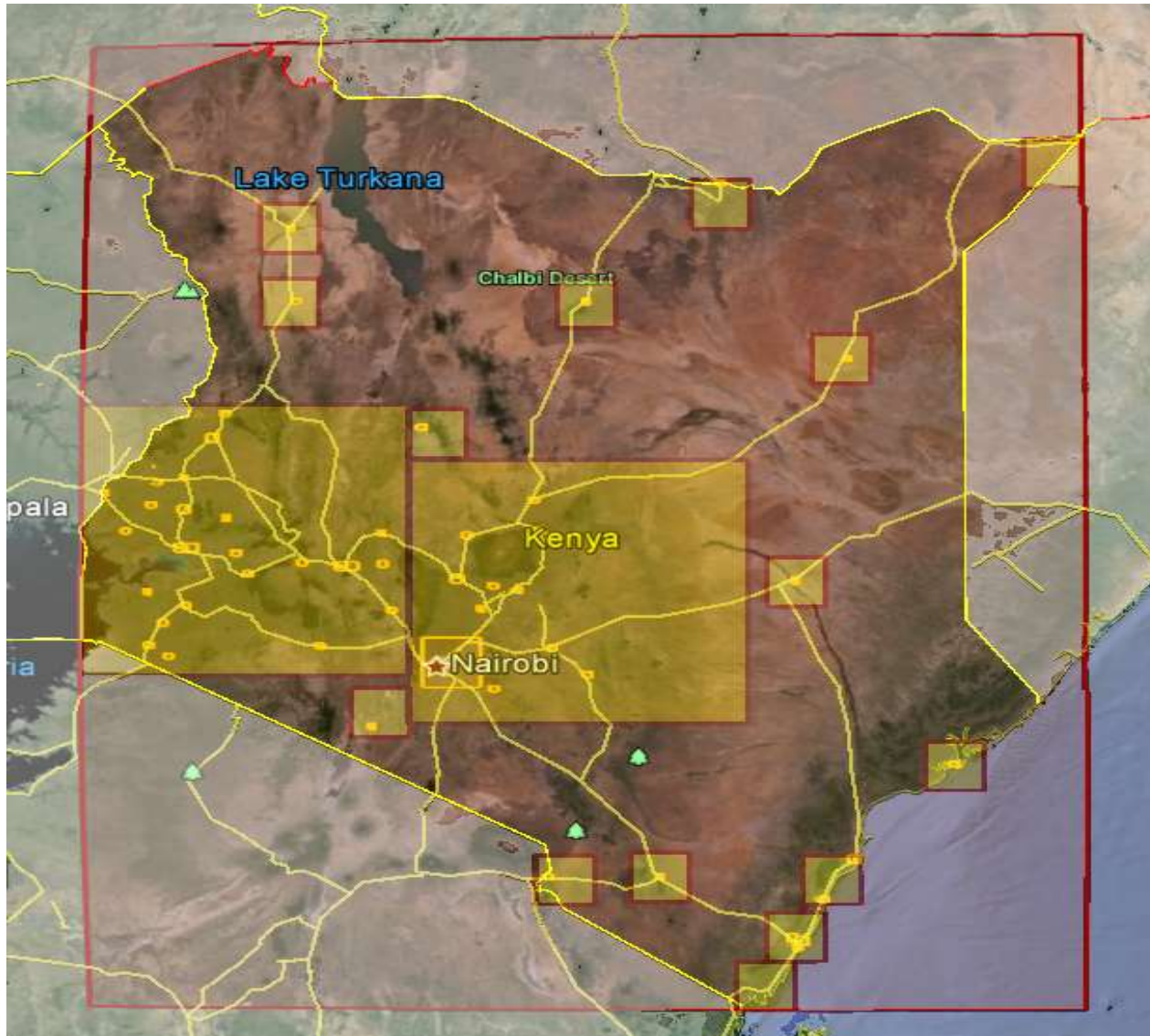


..... and so on

Area name	population	mapcodes
Naivasha	140,000	D00.00-...
Wajir	85,000	DJ0.00-...
Homa bay	60,000	F00.00-...
Migori	60,000	FJ0.00-...
Nanyuki	50,000	G00.00-...
Embu	60,000	GJ0.00-...
Busia	60,000	H00.00-...
Mandera	90,000	HJ0.00-...
Kilifi	70,000	J00.00-...
Kericho	105,000	JJ0.00-...
Machakos	65,000	K00.00-...
Isiolo	45,000	KJ0.00-...
Kisii	85,000	L00.00-...
Nyahururu	50,000	LJ0.00-...
Narok	70,000	M00.00-...
Molo	110,000	MJ0.00-...
Muranga Town	35,000	N00.00-...
Webuye	65,000	NJ0.00-...
Kapsabet	90,000	P00.00-...

Area name	population	mapcodes
Lamu	12,000	PJ0.00-...
Lodwar	60,000	Q00.00-...
Voi	45,000	QJ0.00-...
Maralal	35,000	R00.00-...
Eldoret	280,000	RJ0.00-...
Lokichar	30,000	S00.00-...
Oi kalou	65,000	SJ0.00-...
Kagumo/Kerugoya	95,000	T00.00-...
Moyale	40,000	TJ0.00-...
Marsabit	25,000	V00.00-...
Ranen/Kitere	20,000	VJ0.00-...
Siaya	45,000	W00.00-...
Muhoroni	35,000	WJ0.00-...
Kitui	30,000	X00.00-...
Makutano	20,000	XJ0.00-...
Kehancha	45,000	Y00.00-...
Magadi	20,000	YJ0.00-...
Taveta	70,000	Z00.00-...
Likoni/Mtongwe	20,000	ZJ0.00-...

6 Digit Mapcodes



95% of population
6-letter mapcodes
or less

25% of population
5-letter mapcodes

1,000,000 have
4-letter mapcodes
(*center of Nairobi*)

Universally & Widely Accepted

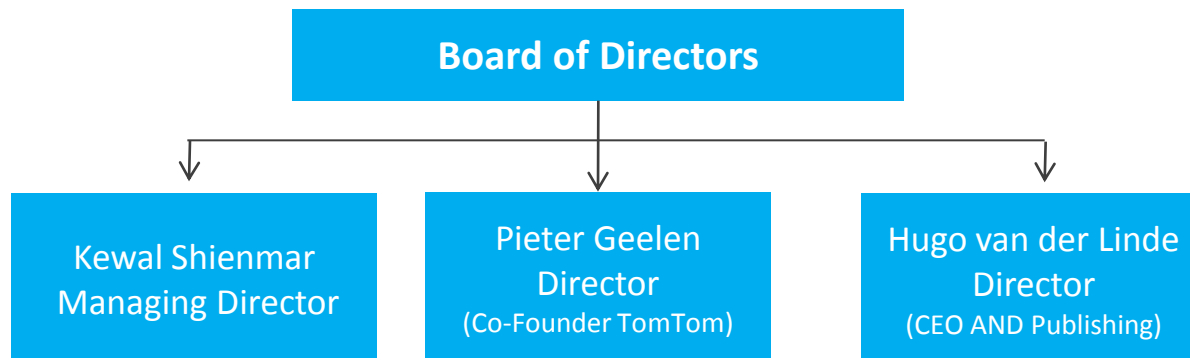


Mapcodes are **universally** accepted, and **widely** supported

- Published as a world-wide **standard**
- Put all IP in a **non-profit** Mapcode Foundation
- Allow **barrier-free use** (no royalties, brand requirements, restrictions or conditions)
- Freely provide **specs** and **source code** to mappers (Nokia, ESRI), their customers (Mio, Garmin), and web players (Google, Bing)
- **Patent** to protect against “flavours”
- Claim **maintenance** (of algorithms and tables).

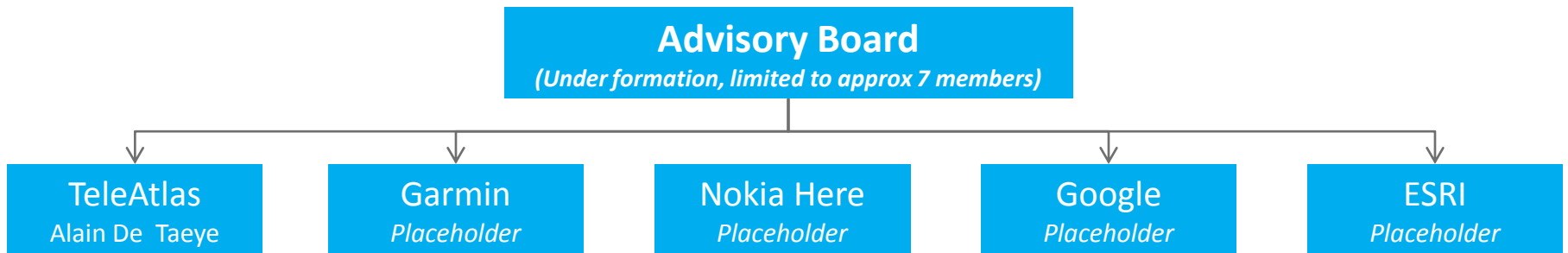
Mapcode Foundation

- Non-profit organization
- Stimulates use of Mapcode standard
- Distributes Mapcode sources, specs, tools:
 - C
 - JavaScript
 - PHP
- Maintains the Mapcode standard

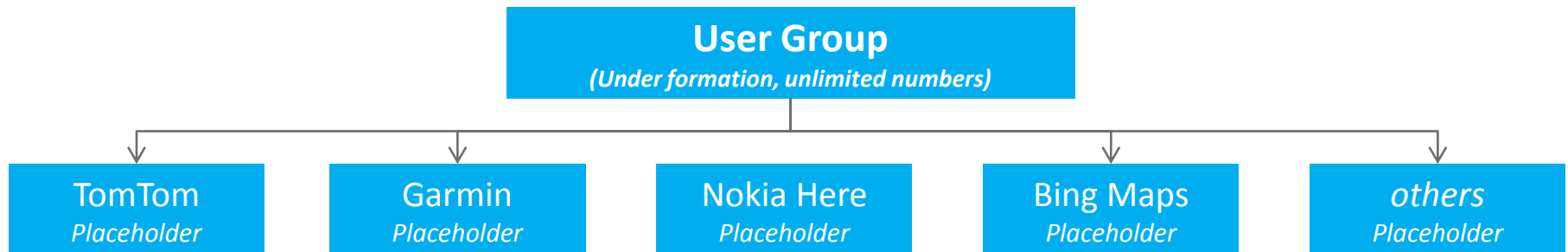


Mapcode Advisory Board & User Group

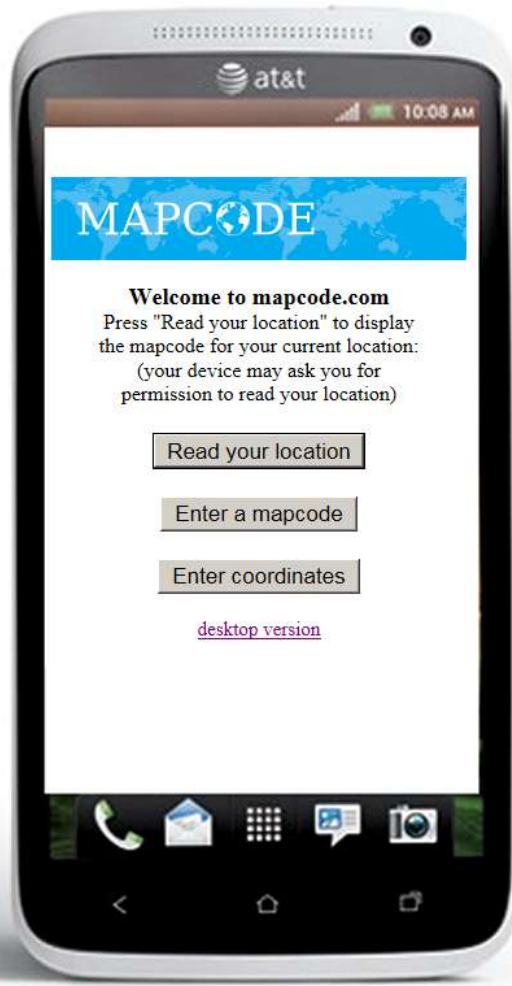
- Leading figures from the Mapping, GIS and Navigation industries to join the Mapcode Foundation



- Mapcode User Group: platform for discussion, opportunities, meetings

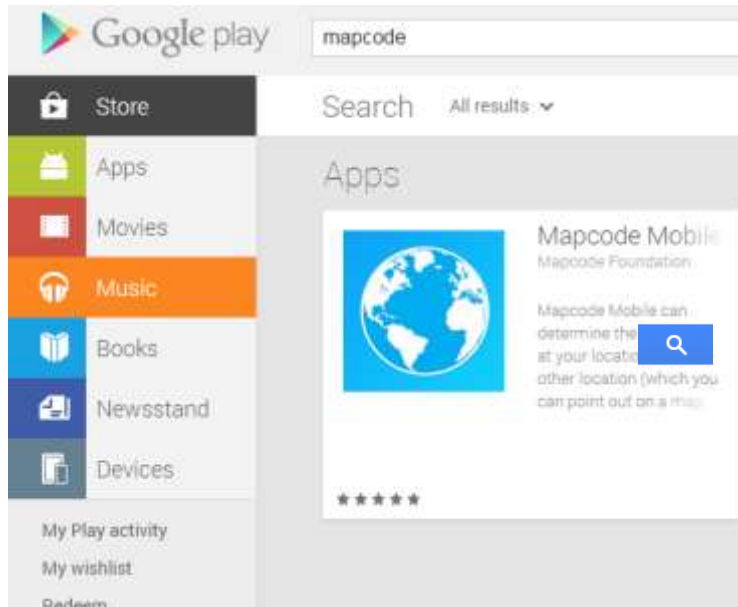


Mobile web www.mapcode.com/m.html

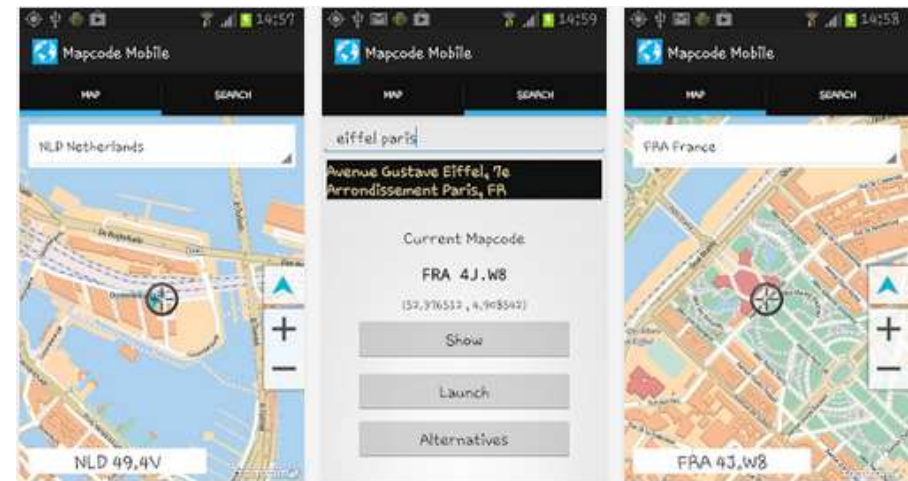


Mapcode Mobile

Free Android App



Enter mapcode and search



Web: www.mapcd.in

Free Android App

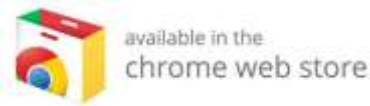


MAPCODE'R
metalwihen · 19 December 2014
Travel & Local

Installed

This app is compatible with your device.

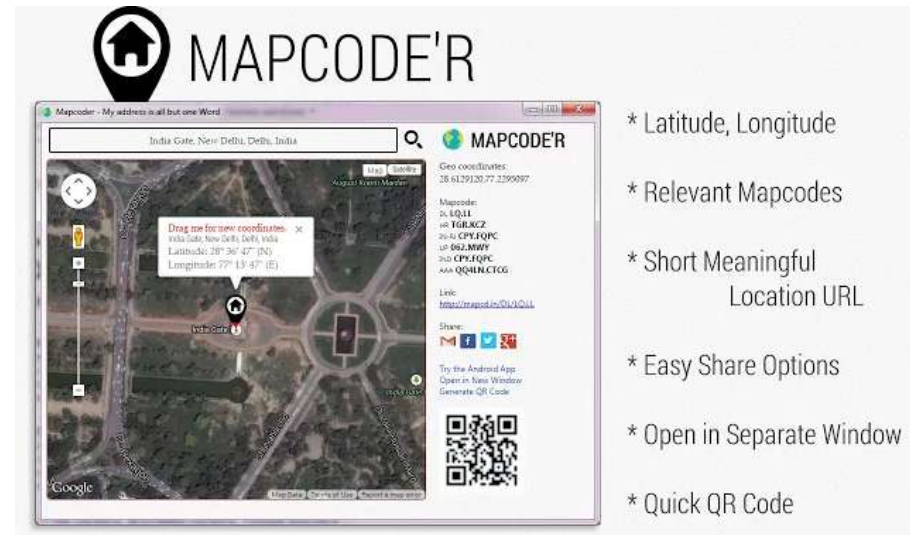
★★★★★ (5)



Google Chrome Extension



MAPCODE'R
MY ADDRESS IS
ALL BUT ONE WORD



MAPCODE'R

India Gate, New Delhi, Delhi, India

Geo coordinates:
28 6129120 77 2290097

Mapcode:
28 6129120 77 2290097
28 6129120 77 2290097
28 6129120 77 2290097
28 6129120 77 2290097

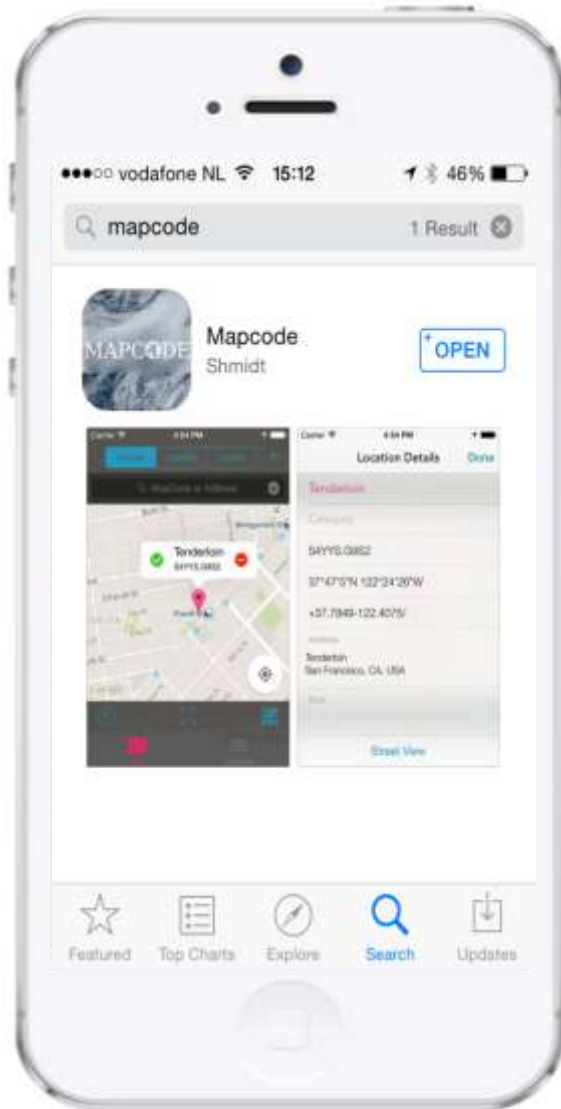
Link:
<http://mapcd.in/DL9Q44>

Share:

Try the Android App
Open in New Window
Generate QR Code

- * Latitude, Longitude
- * Relevant Mapcodes
- * Short Meaningful Location URL
- * Easy Share Options
- * Open in Separate Window
- * Quick QR Code

Mapcode App for iOS



A free app Mapcode for iOS is now available on the App Store

Enter mapcode and search

Mapcode.com

Contains all countries and supports all languages and alphabets



The logo features the word 'MAPCODE' in white capital letters, with a globe icon replacing the letter 'O'. Below it is the tagline 'A short address for any location on Earth'. The navigation bar includes links for 'Home', 'About mapcodes', 'Downloads', 'Interactive map', and 'About us'. A language selector in the top right corner shows 'English UK' with a flag icon.

Search: Context: [South Africa](#)



Mapcode for latitude/longitude -25.985516, 28.123916:

South Africa (ZAF) ▾

ZAF **PC2.HN**

Note: The location also has [alternative mapcodes](#) in South Africa ([why?](#)).

Note: The location also has mapcodes for other territories ([why?](#)).

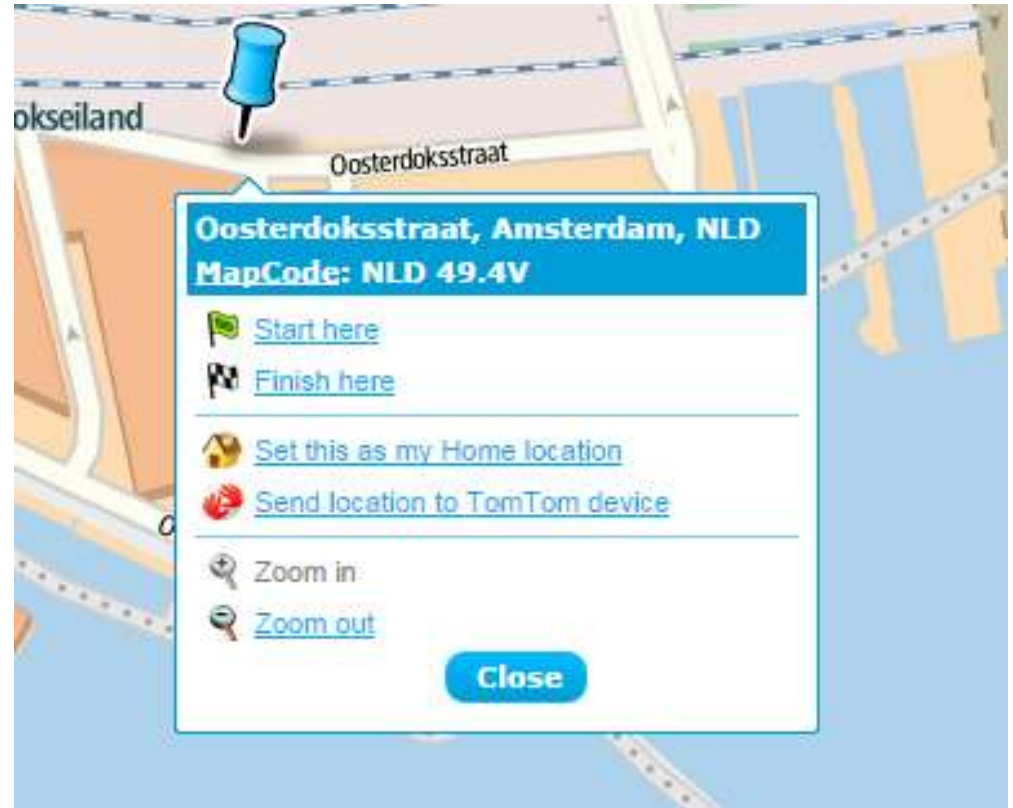
Display on [Google interactive map](#) | [TomTom interactive map](#) | [Google](#) | [TomTom](#) | [Bing](#) | [Nokia](#) | [Yahoo](#) | [MapQuest](#) | [OpenStreet](#) | [Streetview](#) | [Wikimania](#)

Show: [العربية](#) | [אנגלית](#) | [Беларуская](#) | [Български](#) | [Cebuano](#) | [Čeština](#) | [Dansk](#) | [Deutsch](#) | [English](#) | [Español](#) | [Esperanto](#) | [Eesti](#) | [Français](#) | [Galego](#) | [Gujarati](#) | [Hebrew](#) | [Hindi](#) | [Indonesian](#) | [Italian](#) | [Japanese](#) | [Korean](#) | [Lithuanian](#) | [Latvian](#) | [Malay](#) | [Malayalam](#) | [Mandarin](#) | [Marathi](#) | [Nepali](#) | [Norwegian](#) | [Oromo](#) | [Punjabi](#) | [Portuguese](#) | [Romanian](#) | [Russian](#) | [Slovak](#) | [Slovenian](#) | [Swedish](#) | [Tamil](#) | [Telugu](#) | [Thai](#) | [Turkish](#) | [Ukrainian](#) | [Urdu](#) | [Vietnamese](#) | [Yiddish](#) | [Zulu](#) | [None](#)

TomTom.com: Mapcode Look Up



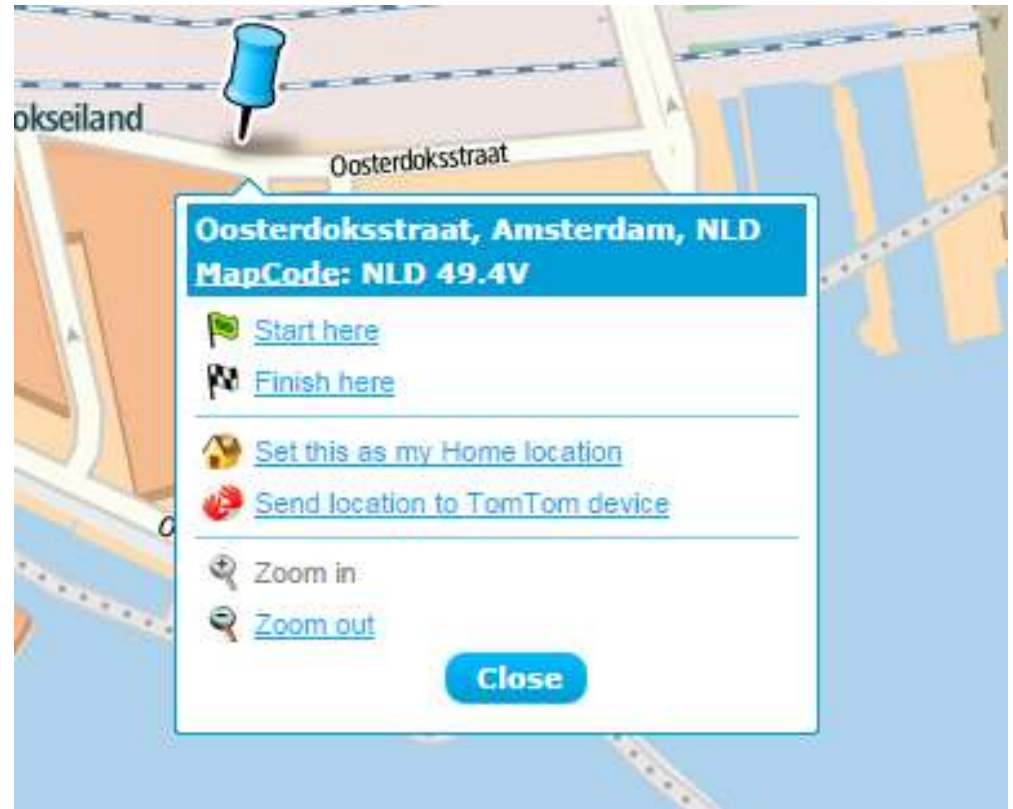
Click anywhere on the map to find the corresponding mapcode



TomTom.com: Plan a route with a Mapcode



Click on “Start Here”



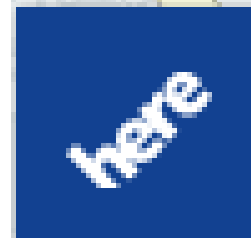
TomTom.com: Plan a route with a Mapcode



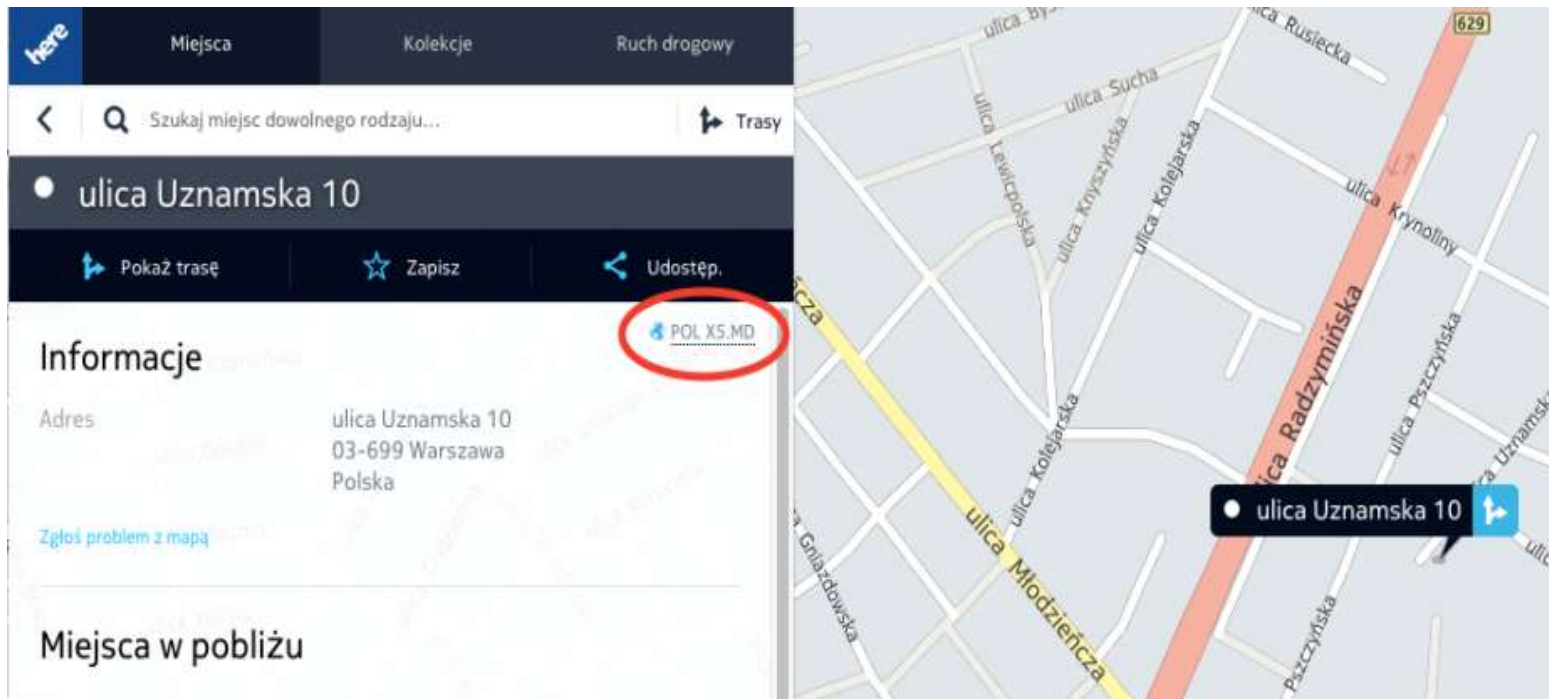
- Enter destination mapcode or address
- Click on “Plan Route”

The screenshot shows the TomTom route planning interface. At the top, there are two tabs: "Plan a route" (active) and "Find a location". Below the tabs, there are input fields for "From:" and "To:". The "From:" field contains "NLD 49.CV" with a subtext "e.g., '1 Bridge St, London'". The "To:" field contains "NLD 31.CTW". Below these fields, there is a "Traffic:" section with a checked checkbox and the text "Minimise delays". The "Leave:" section has a dropdown menu set to "Right now" with a blue arrow icon and an orange question mark icon. Below the "Leave:" dropdown, there are two more dropdown menus: "Today" and "05:30 pm". At the bottom, there are three buttons: "Reverse" (grey), "Clear route" (blue), and "Plan route" (blue).

Here Maps – Route Planner



Under implementation at Here Maps



TomTom: Satellite Navigation



Ever increasing
support

Mapcodes in 60
million TomTom
devices

*recognized in
“city/postcode”
input field*

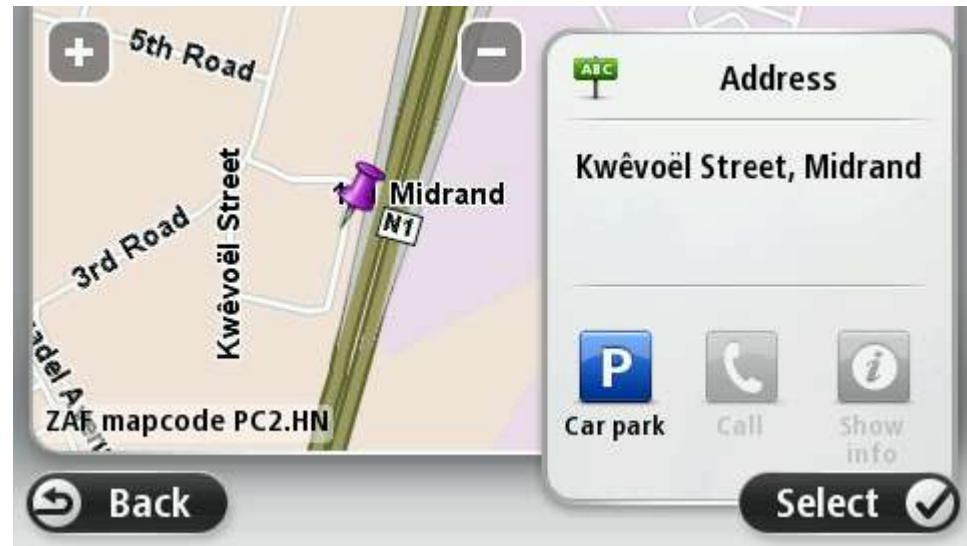
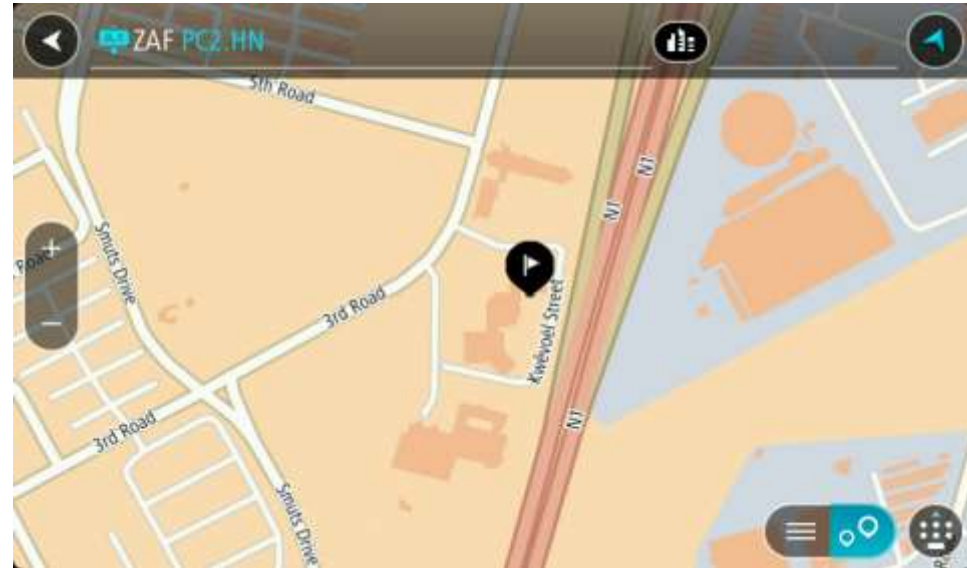


TomTom: Legacy SatNav's



GETTING A MAPCODE FOR YOUR LOCATION

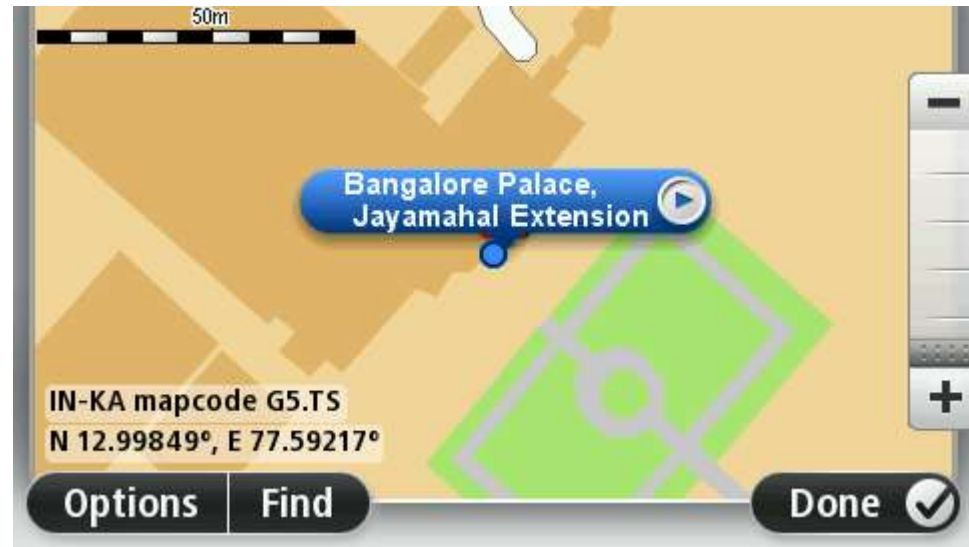
- PND's show mapcode of cursor
 - *Map browser, GPS screen, Where Am I?*



TomTom: Legacy SatNavs

Getting a mapcode for a location

- SatNav's show mapcode of cursor position and where you are



Summary - Mapcodes:



are **international**

can be a “**natural**” part of an address

are **short, readable,** and easy to **remember**

are easy to **verbally** communicate

are easy to **recognize**

THANK YOU, ANY QUESTIONS?

MAPCODE

The human face of coordinates

Mapcode Foundation
Herengracht 514
1017 CC Amsterdam
The Netherlands **2W.JW**